

ALWAR • BEAWAR • BEHROR • BHIWADI • BIKANER • JAIPUR • JODHPUR • KOTA • NEEMRANA

www.rtechgroup.co.in

SITE OFFICE: On Amrit Kaur Hospital Road, Near Petrol Pump, Beawar

CORPORATE OFFICE: Plot No.44, 1st Floor, Sector-44, Gurgaon-122001, Haryana- INDIA. Tel: +91-124-4725300-349.

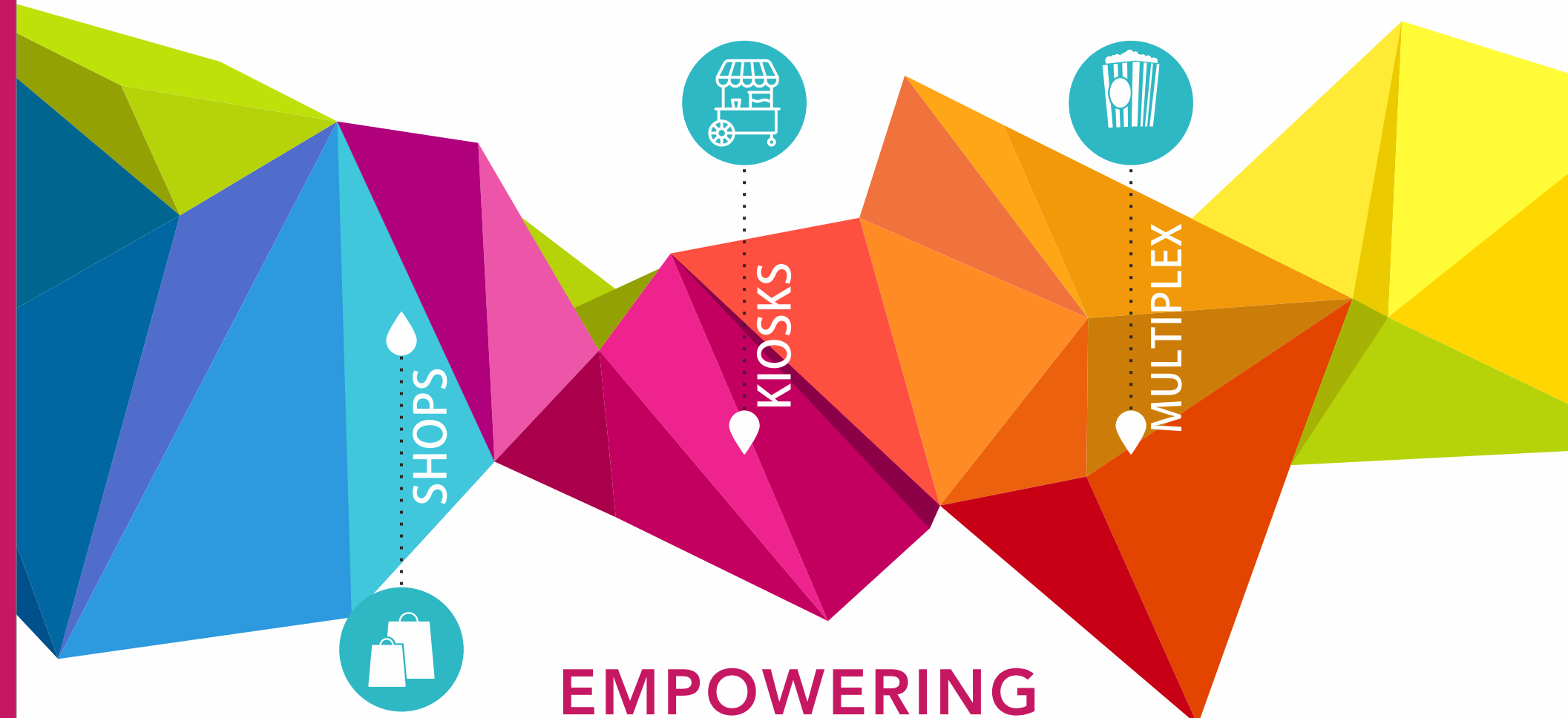
Follow us [social media icons]

A JV Project of R-Tech Group & Gurubachan Singh & Others

Disclaimer: The visual representation shown in this brochure are purely conceptual and for reference only and does not resemble any building structure and shall have no bearing, in any manner of booking made in this project and the developer reserve all rights, in this regard. This brochure is not a legal document.

R>TECH CAPITAL HIGHSTREET BEAWAR

RERA Registration No.: RAJ/P/2018/803



EMPOWERING THE CITY OF BEAWAR

THE GROWTH ENGINE

R-Tech Group is one of the most rapidly growing business conglomerate today with diversified interests across Commercial, Residential, Townships & Retail segments of the real estate industry.

After years of rich market experience & presence, the R-Tech Group, today has more than 17 projects spread across Bhiwadi, Alwar, Behror, Neemrana, Jaipur, Bikaner, Kota, Jodhpur & Beawar (Ajmer) and also coming soon in the city of Udaipur & Bhilwara, which not only gives the Group a vast foot print in North India but also a multi-faceted outlook.

“ WE ARE WHAT WE REPEATEDLY DO. THEREFORE, EXCELLENCE FOR US IS NOT AN ACT, BUT HAS NOW BECOME A HABIT. ”



THE CAPITAL HIGHSTREET, BEAWAR

R-Tech Group brings to you Capital Highstreet, Beawar, (Ajmer) one of the best commercial property in Beawar which has been conceptualised not only to introduce a modern lifestyle but also to empower and touch your lives in such a way so as to make your tomorrow better than today.

This beautifully designed project is spread over an area of 5165.87 sq mtr and is intended to meet the needs of Shopping, Entertainment and Businesses of the people of Beawar and adjoining areas.

The project has been designed by the top architect and is likely to become one of the most sought after places in the city.

Capital Highstreet, Beawar offers Shops, Kiosks, Multiplex with Food Court along with conveniences such as Multi level Parking, Power Backup, 24X7 CCTV surveillance, etc.

Needless to say, that the combination of strategic location and top class facilities is expected to attract a heavy footfall in the area.

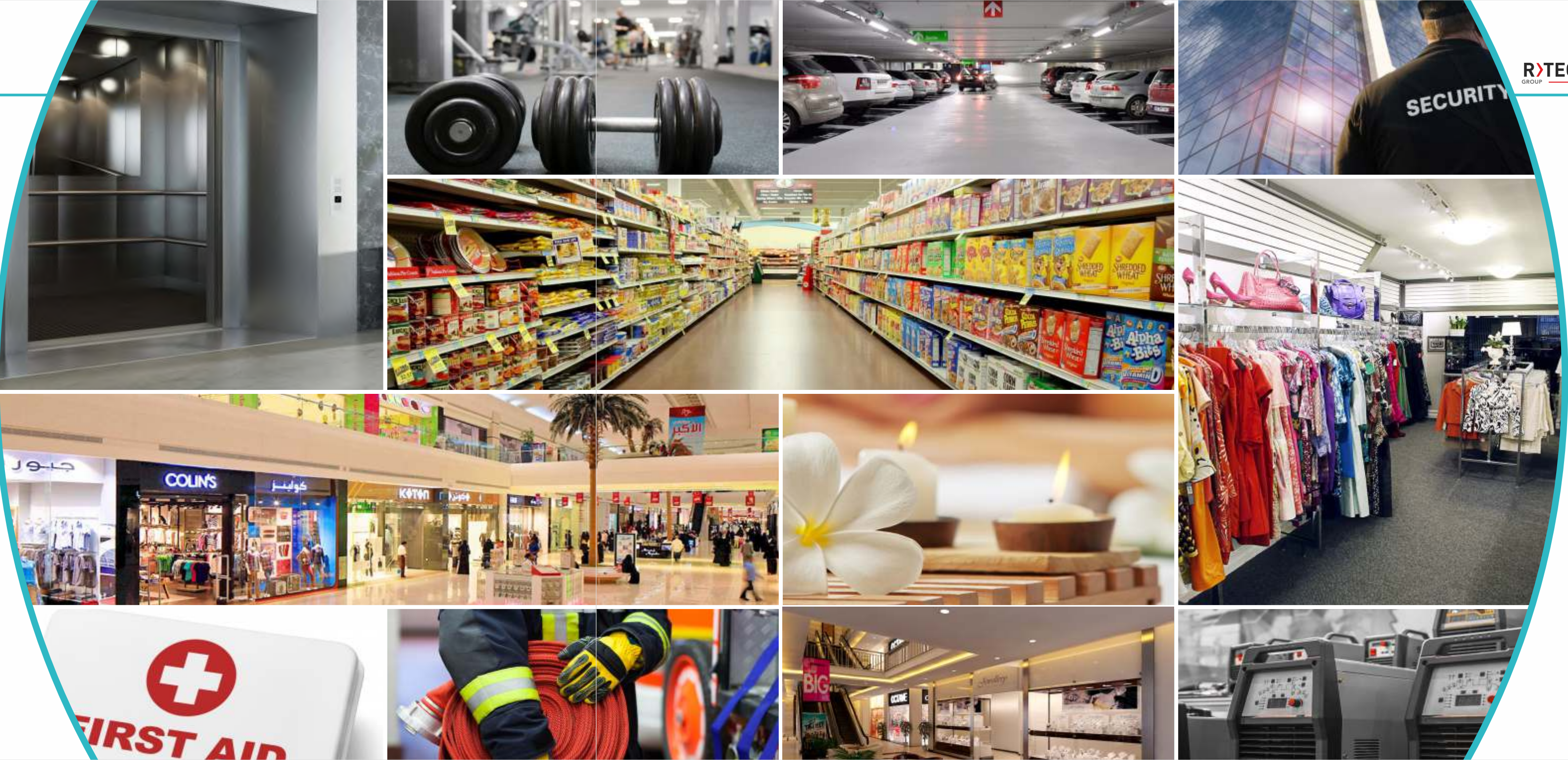


A NEW STAR
ON THE HORIZON
CAPITAL HIGHSTREET, BEAWAR



KEY PROJECT HIGHLIGHTS

- ▶ Over 2,27,410 Sq Ft of Built Up Space
- ▶ Over 293 Feet Frontage
- ▶ City's 1st Commercial Highstreet Market Of Its Kind
- ▶ 7 Level Highstreet Market -Shopping & Multiplex with Food Court
- ▶ 401+ 2 Level Basement & Open Area Parking
- ▶ 459 Retail Units
- ▶ Landscaped Open Plaza & Cafe
- ▶ World Class Gymnasium & Spa
- ▶ Modern Fire Safety Measures
- ▶ Power Back-Up
- ▶ High Speed Escalators & Lifts
- ▶ First Aid Centre



FASHION CLOTHES

SHOPS

Ideally Suited For:

- Cosmetics Stores
- Dry-Cleaning Shops
- Grocery Stores
- Departmental Stores
- Mobile Phone Store/Services
- Kids/Gents/Ladies Wear Stores
- Restaurants
- Travel Bags/ Luggage Stores
- Jewellery Shops
- Electronics Stores
- Foot Wear Shops
- Medical Store/Chemist
- Spa & Saloon
- Fitness Centre
- Gaming Parlours
- Home Furnishing Stores
- Boutique Shops



KIOSKS

Ideally Suited For:

- Sunglasses/Opticals
- Ice Cream Vends
- Express Saloons
- Books/Staionary Marts
- Art/Sculpture Vends
- Ladies Bags
- Bakes & Confectionary Vends
- Beauty Parlours
- Tattoo Makers
- Fast Food Vends
- Florists
- ATM
- Juice Corners
- Photo Frames



MULTIPLEX

- State-Of-The-Art Cinematic Experience
- 4 Screens
- 964 Seating Capacity
- Digital Projection System
- Dolby Surround Sound
- Plush Seating
- Lavish Cinema Food Courts



LOCATION & CATCHMENT

The Capital Highstreet, Beawar, is located on Amrit Kaur Hospital road, near petrol pump and is just 0.5 Kms from Beawar Railway station. Top educational and medical facilities such as Beawar College, and Amrit Kaur Government Hospital are also in the close proximity.

Also, surrounding Capital Highstreet, Beawar are high density residential colonies and schools, which will inturn ensure heavy footfall from the captive catchment area.

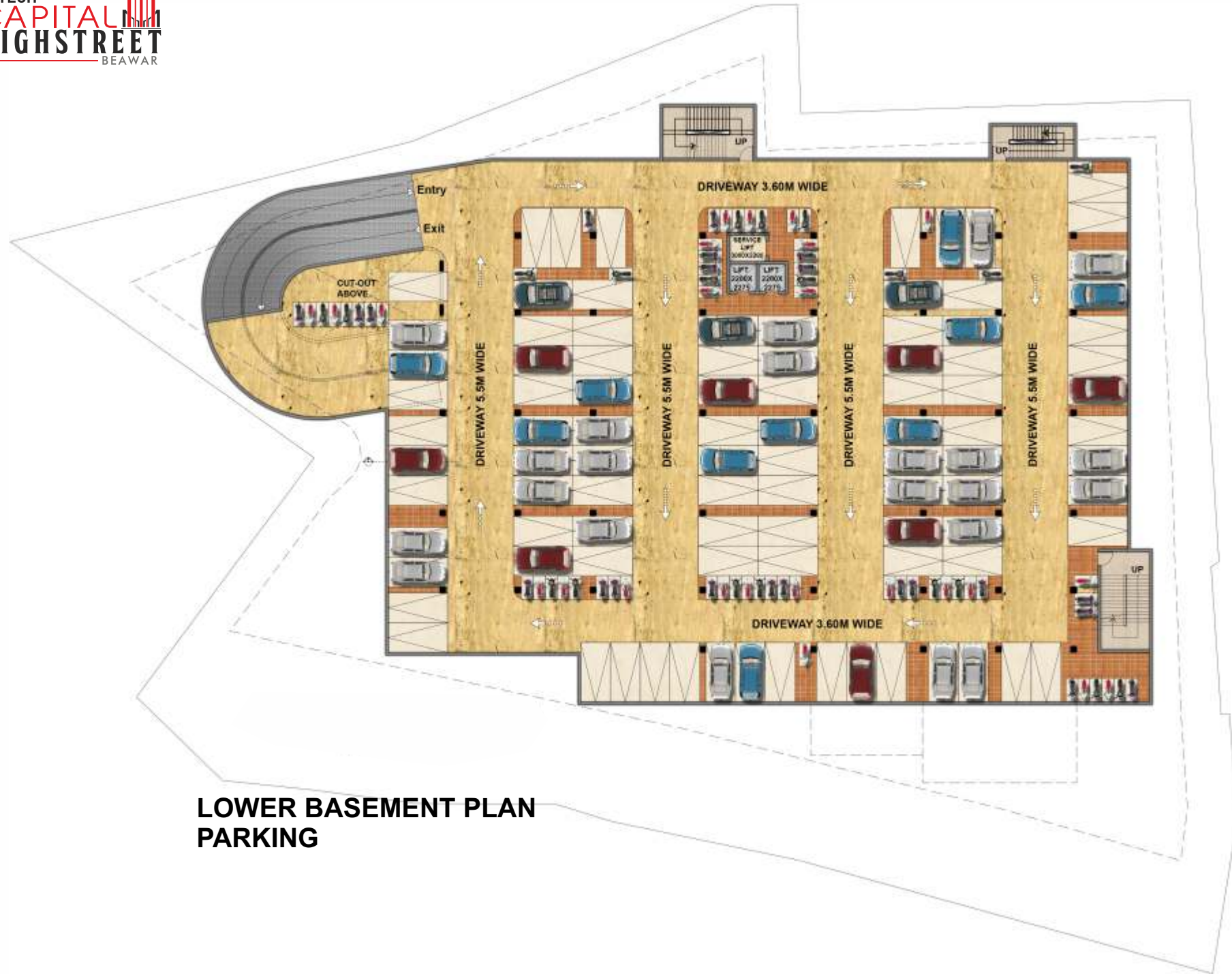


THE R-TECH ADVANTAGE

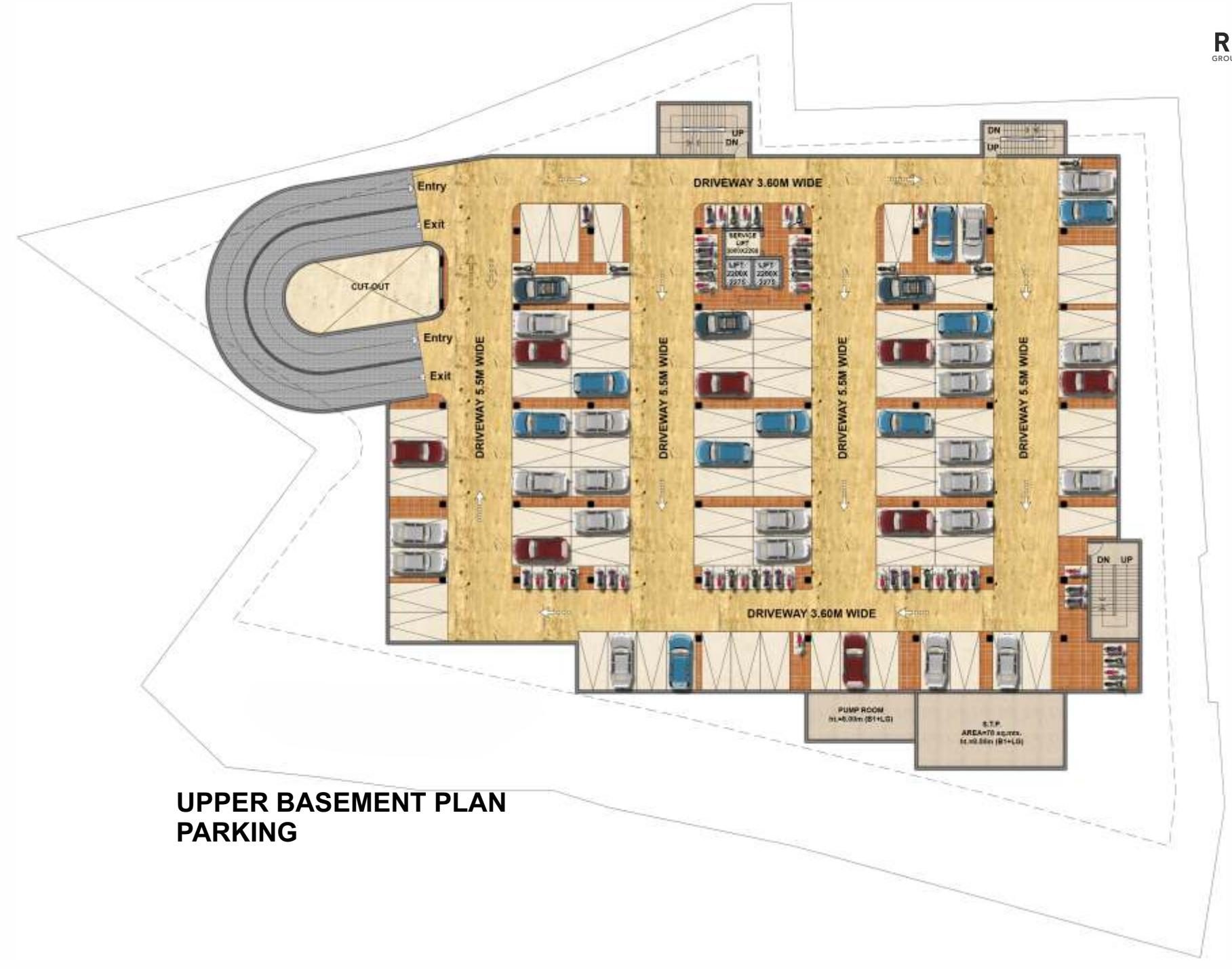
Capital Highstreet, Beawar is a state-of-the-art project, designed and planned by M A Architects, one of the leading architects & interior designers in the country, deploying cutting edge technology to the project. The complex will be surrounded with furnished streets and lush areas around the corner to make it truly impressive and the best commercial destination of the city. Needless to say, that it will be equipped with all modern features and contemporary amenities.

What's more, the entire structure of Capital Highstreet, Beawar is being made to be secured against earthquakes and other physical damages using the very latest in technology.

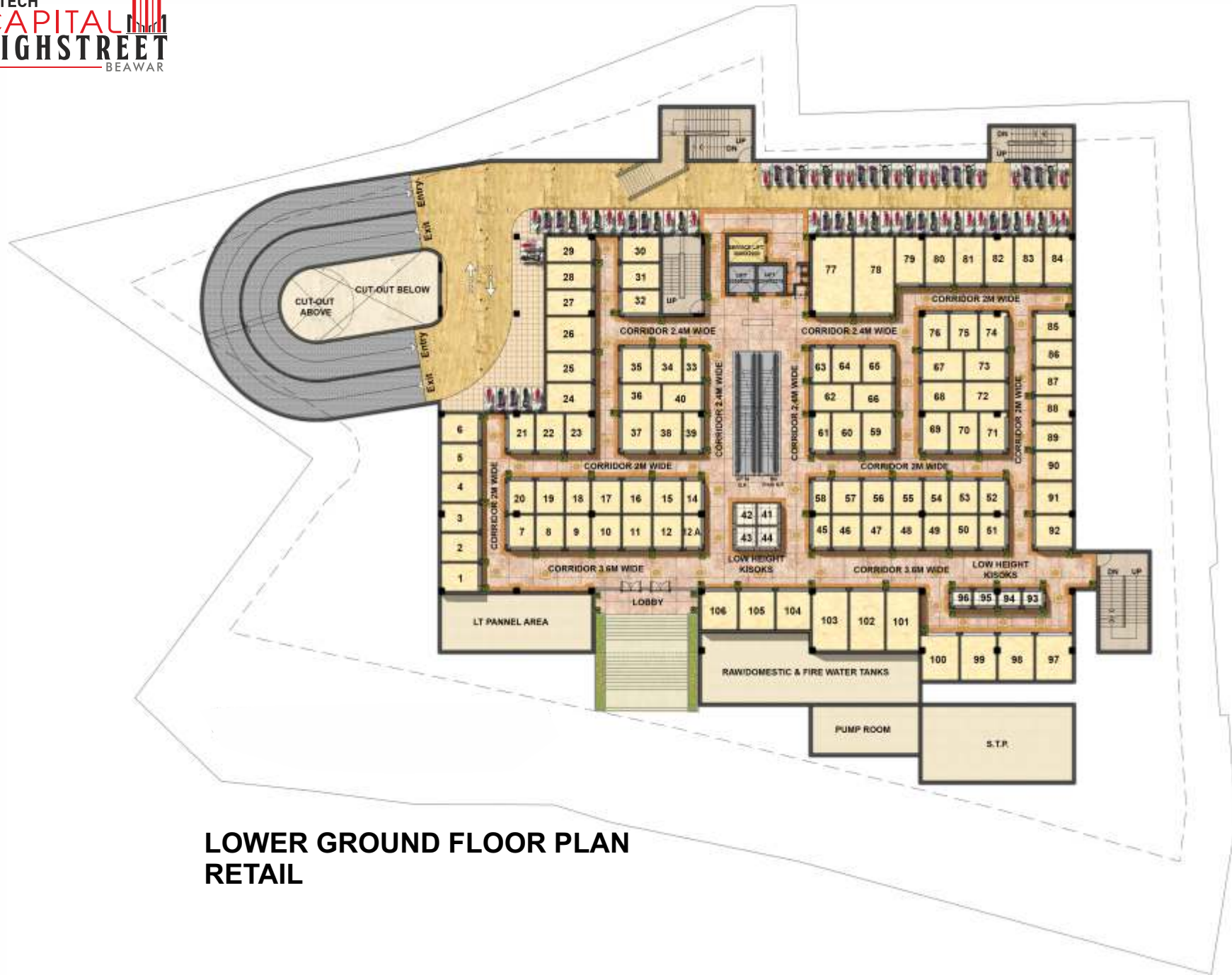




**LOWER BASEMENT PLAN
 PARKING**



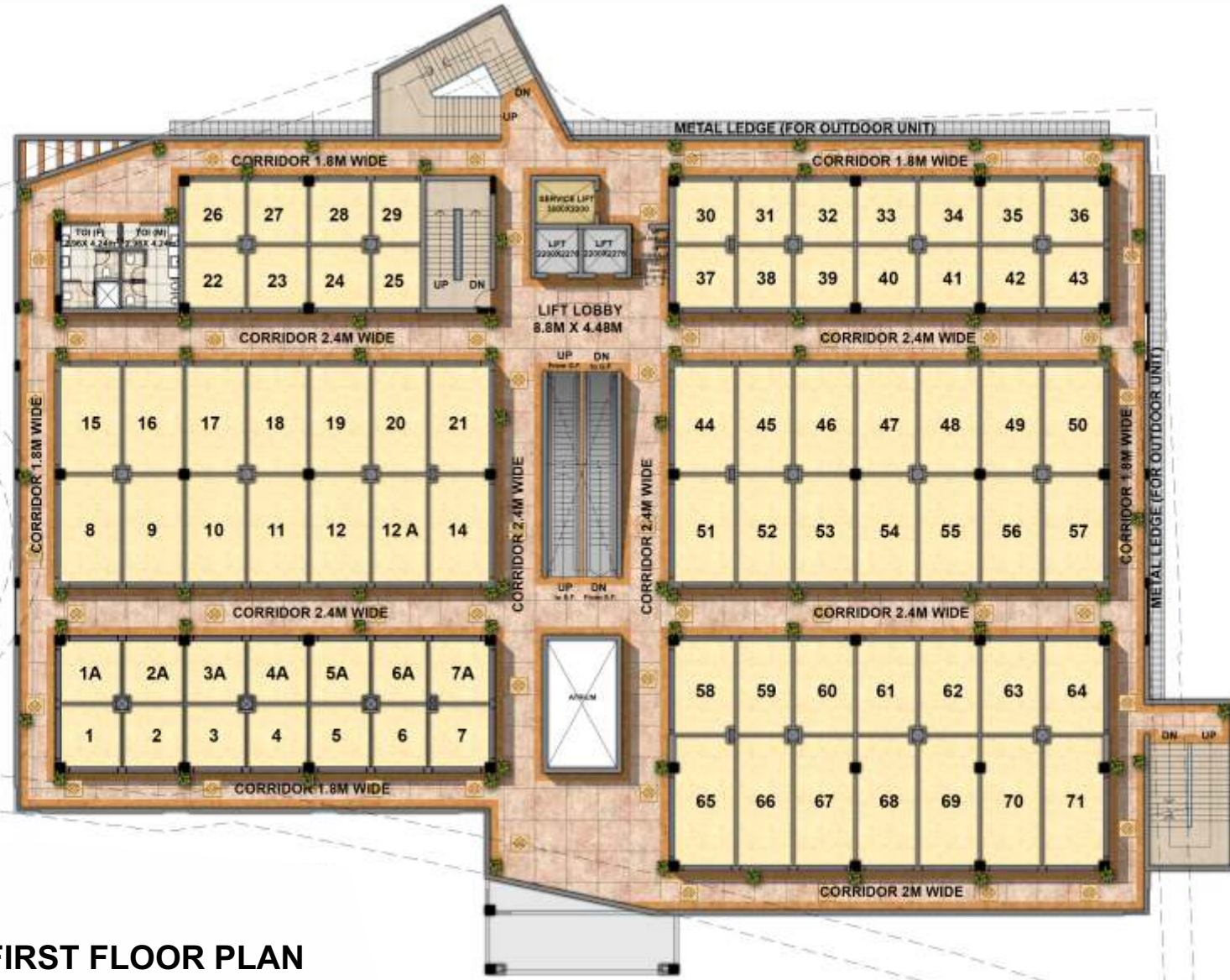
**UPPER BASEMENT PLAN
 PARKING**



**LOWER GROUND FLOOR PLAN
 RETAIL**



**GROUND FLOOR PLAN
 RETAIL**



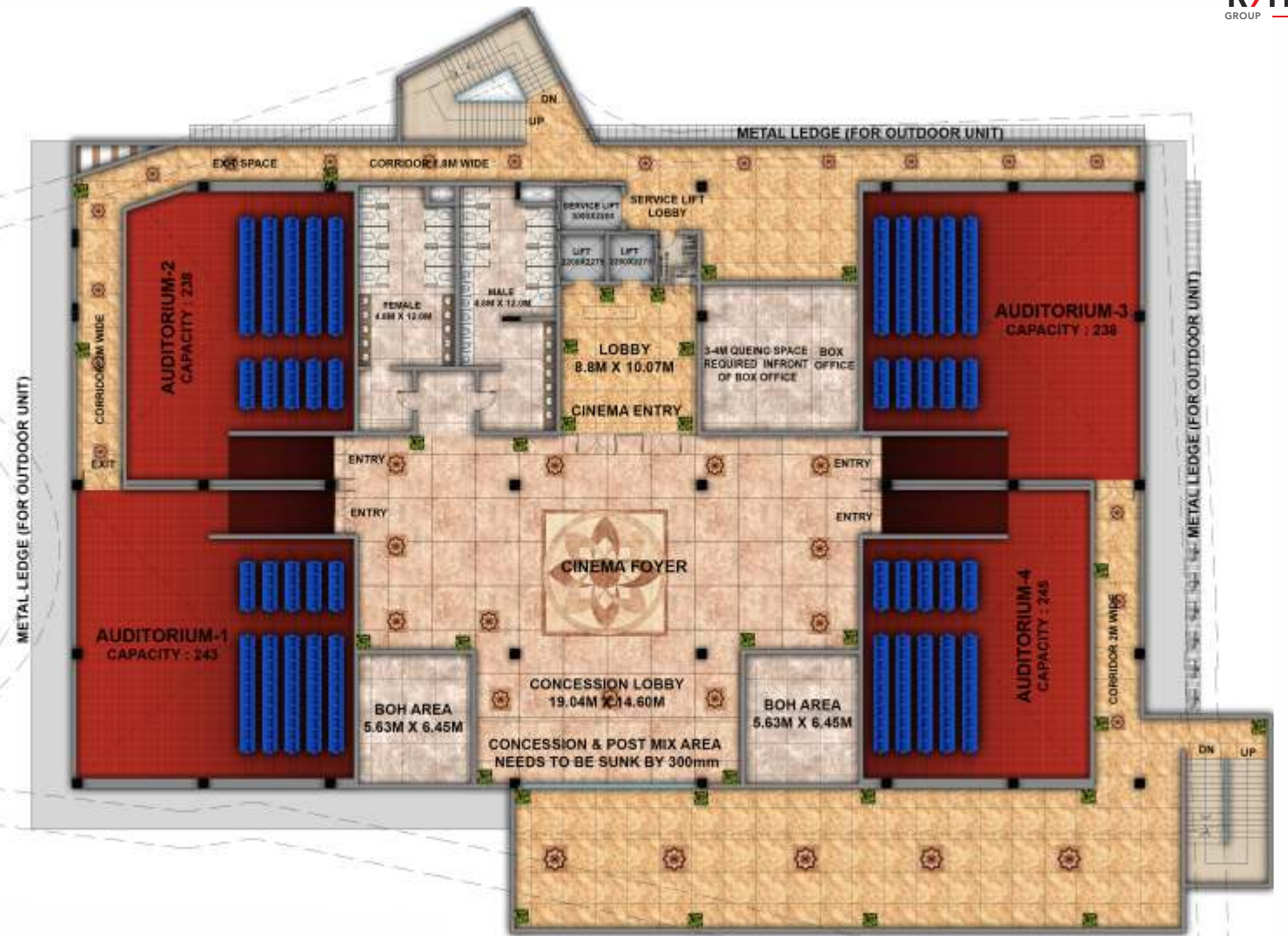
**FIRST FLOOR PLAN
 RETAIL**



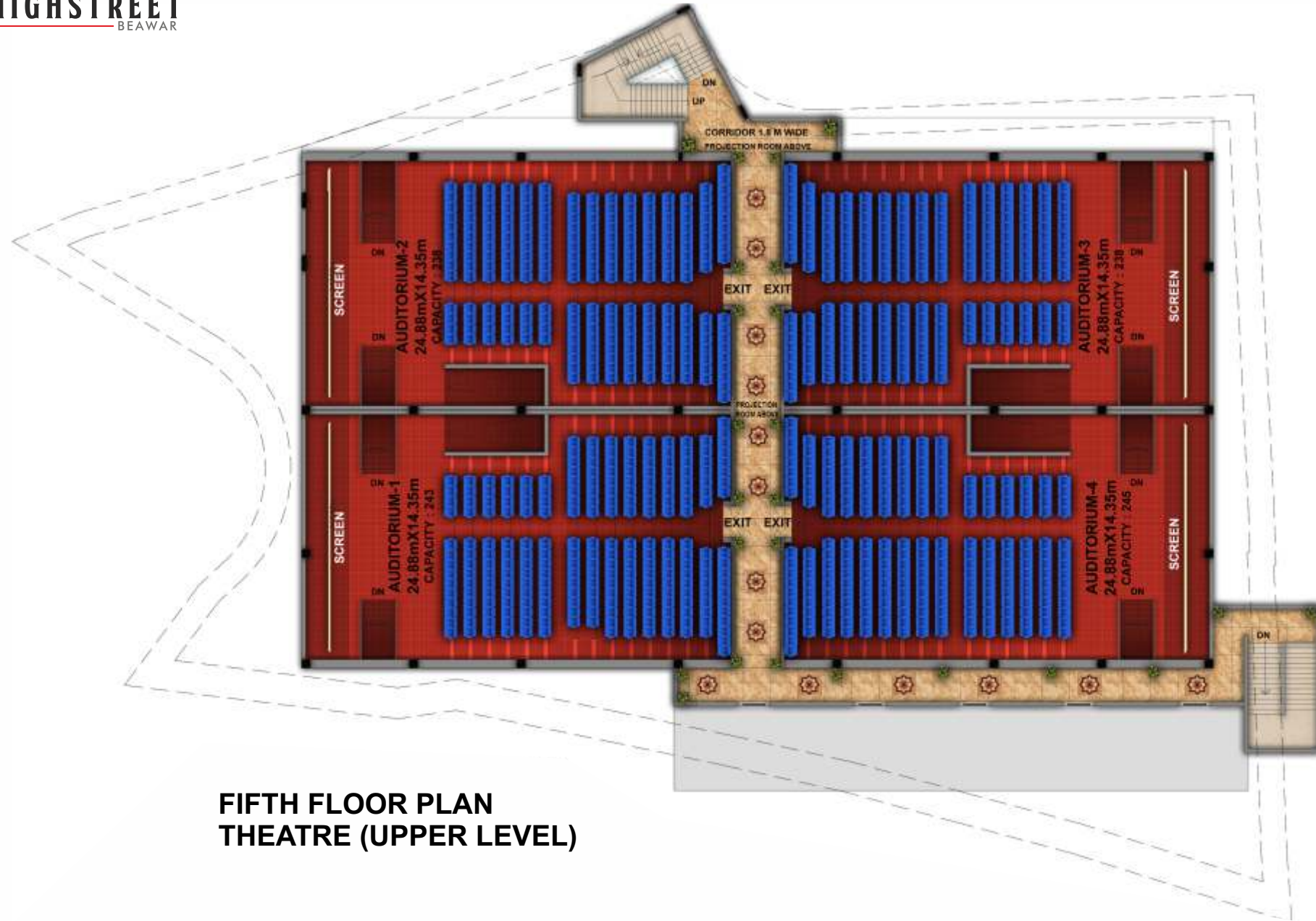
**SECOND FLOOR PLAN
 RETAIL**



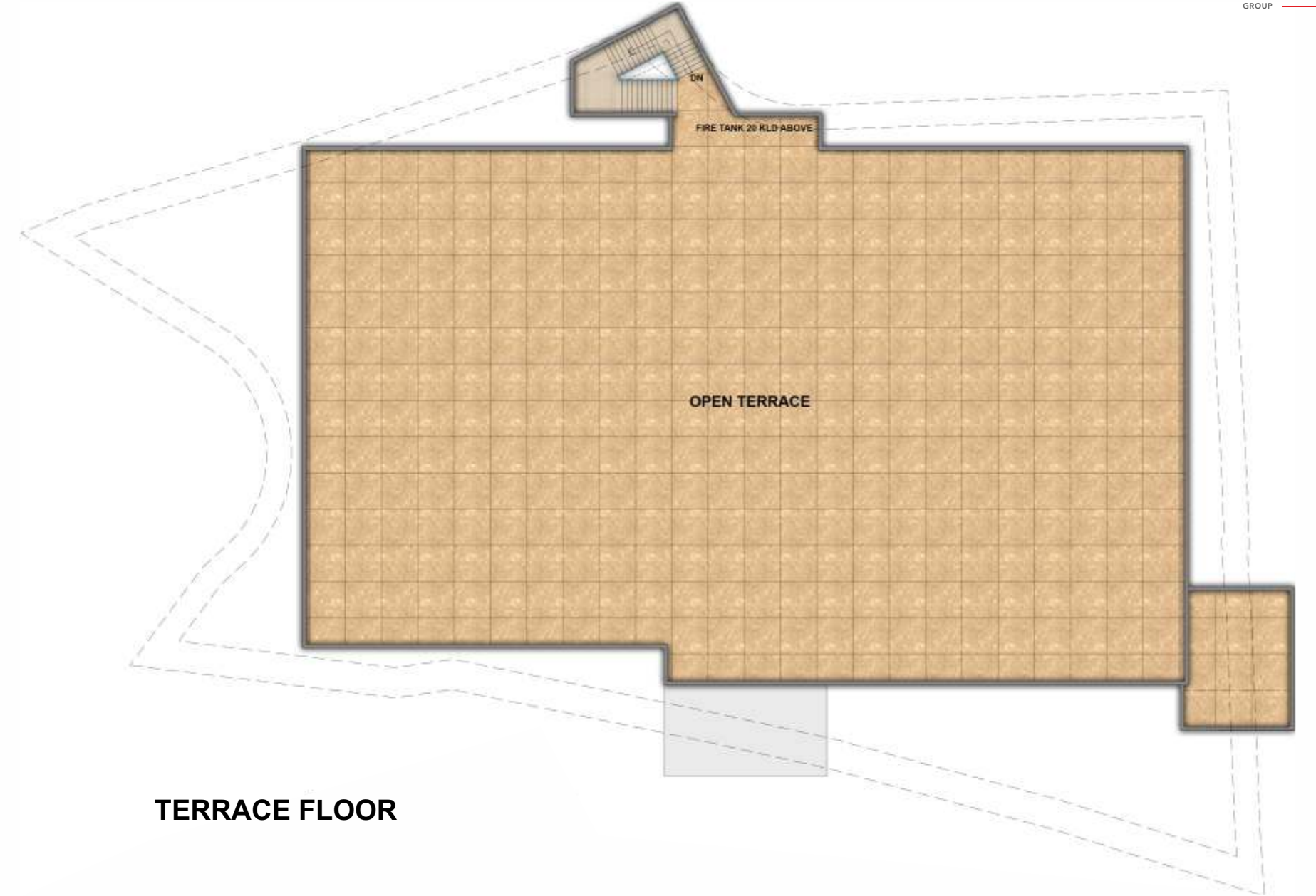
THIRD FLOOR PLAN



**FOURTH FLOOR PLAN
 THEATRE (LOWER LEVEL)**



FIFTH FLOOR PLAN
THEATRE (UPPER LEVEL)



TERRACE FLOOR



SPECIFICATIONS

STRUCTURE:	Reinforced cement concrete (RCC) controlled framed structure & Brick wall partitions with Earthquake Resistant technology.
COMMON AREAS:	
Flooring	Combination of Granite Stone or Ceramic Tiles or Hard wearing floor Material or equivalent.
Walls	Combinations of Cement-sand Plaster with suitable long-lasting Paints.
Toilets	Flooring-Marble/Granite/other suitable stones/Anti skid Ceramic tiles Walls- Ceramic wall tiles up to 7 feet height and acrylic emulsion paint on rest plastered surface. Ceiling - False ceiling (Gypsum/POP/Accoustical tile) Sanitary ware-Branded EWC, Wash basin, Urinals, Mirrors & Taps Door shutter- Laminated wooden flush door shutter with wood/MS frame
Vertical Circulation	Lifts and Escalators
Exterior Finishing	Combination of cement Plaster and Exterior Paint/Texture Paint or equivalent.
Salient Features	Power Back-up, External Lighting, Centralized security system, Parking, Water supply, Arrangement for Disposal of Storm & Sullage water.
SPACE/UNIT/SHOP/KIOSK	
Flooring	Vitrified Tiles or equivalent
Walls	Plain Cement-sand Plaster
Ceiling	Exposed concrete finished with white wash
Life Safety	Wet Riser/ Hose Reels, Sprinklers, Emergency lighting and Fire detection system connected to the common system of the building in conformity to Fire safety norms and smoke extraction system.
Shop Front	MS Rolling Shutter painted with Enamel paint



Completion Year: 2010
Covered Space: 350000 Sq Ft Approx
Fully Occupied

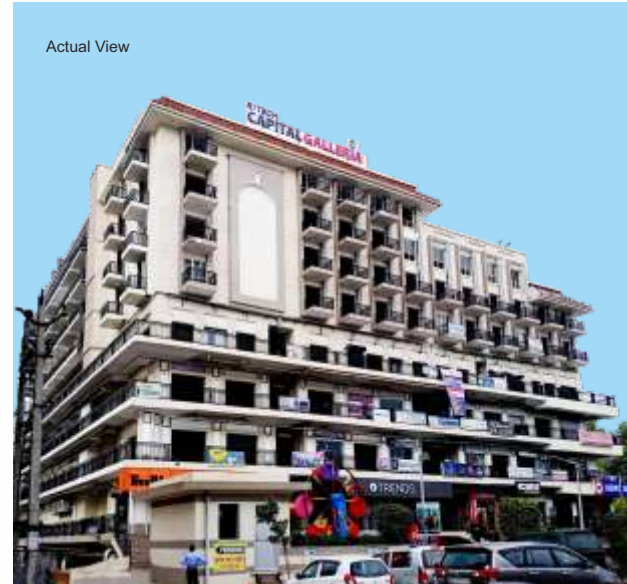
Completion Year: 2011
Covered Space: 200000 Sq Ft Approx
Fully Occupied

Completion Year: 2016
Covered Space: 535000 Sq Ft Approx
Total No Of Units: 963

Completion Year: 2016
Covered Space: 1050000 Sq Ft Approx
Total No Of Units: 1849

Completion Year: 2016
Covered Space: 125000 Sq Ft Approx
Total No Of Units: 207

Phase - I: Completion Year: 2017
Covered Space: 940065 Sq Ft Approx
Total No Of Units: 756
RERA REGN. NO: RAJ/P/2017/075



Completion Year: 2018
Covered Space: 300019 Sq. Ft.
Plot Area: 5655 Sq. mtr.
Total No of Units: 534
RERA REGN. NO: RAJ/P/2017/073



Completion Year: 2019
Covered Space: 400000 Sq. Ft.
Total No of Units: 636
RERA REGN. NO: RAJ/P/2017/074



Completion Year: 2020
Spread Across: 85 Bighas
Affordable Housing, Plots & Commercial Spaces
Total No of Units: 4000
RERA REGN. NO: RAJ/P/2017/034



Completion Year: 2019
Plot Area: 11890 Sq. mtr.
Total No of Units: 859
RERA REGN. NO: RAJ/P/2017/045



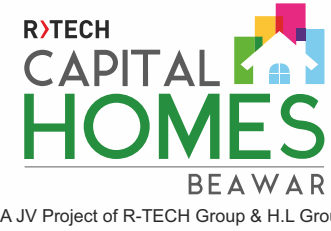
Phase - I: Completion Year: 2021
Plot Area: 28454 Sq. mtr.
Total No of Units: 2119
RERA REGN. NO: RAJ/P/2017/153



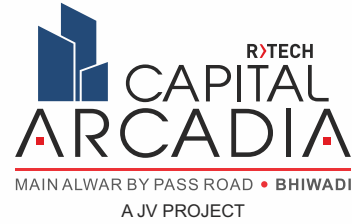
Completion Year: 2021
Plot Area: 5251.70 Sq mtr
Total No Of Units: 405
RERA REGN. NO: RAJ/P/2018/612

UNDER CONSTRUCTION PROJECTS

THE R-TECH FOOTPRINT



मुख्यमंत्री जन आवास योजना - 2015
EWS एवं LIG हाउसिंग
Completion year: 2023
No. Of Units: 342 (Tower A,B & C)
RERA REGN. NO: RAJ/P/2018/616



Completion Year: 2021
Plot Area: 5493.70 Sq mtr
Total No Of Units: 637
RERA REGN. NO: RAJ/P/2018/701



Completion Year: 2024
Plot Area: 3444 Sq mtrs
Total No Of Units: 286
RERA REGN. NO: RAJ/P/2019/992



All the Documents related to the said project are duly uploaded on www.rera.rajasthan.gov.in and the prospective buyer(s) can verify the same.

ASSOCIATED BRANDS



Not the one to rest on its laurels the R-Tech Retail – A Retail wing of R-Tech Group continues to expand its horizons by entering into one of the fast growing retail segments by way of a mix of franchise model as well as launching its own retail brands
