



**R-TECH**  
DEVELOPERS



HYPERMARKET / RETAIL / FASHION BRANDS / JEWELLERY / RESTAURANTS

# Cross Point Mall

## ALWAR





**R-TECH**  
DEVELOPERS

*R-Tech welcomes you to Alwar,  
the Gateway to Rajasthan.*

**Cross Point Mall**  
**ALWAR**

## Alwar - Industrial and Export hub

Alwar is the main entry point to Rajasthan from the NCR and very well connected by air, road and rail networks to nearby metros and towns.

The Alwar district comprises 15 industrial areas developed by RIICO, covering 3000 large and medium scale industrial units. Eminent organizations include Ashoka Leyland, Honda Siel, United Beverage, Orient Craft, Eicher Tractor and others.

**Alwar is the 2nd largest town and the 2nd largest education centre in Rajasthan.**

DIVERSE INDUSTRIES

| EXPORT HUB

| EDUCATION CENTRE



## Location and Catchments

Cross Point Mall is located strategically in the centre of Alwar. The mall's neighbourhood is the busiest retail & commercial hub of Alwar, next to extensively inhabited residential areas.

This region aims to be a centre of retail, entertainment and commercial activity of international standards. Primary catchments will be from surrounding residential and commercial pockets, while secondary catchments will be the NCR and neighbouring states.

*Alwar has the 2nd largest population in Rajasthan - almost 30 lakhs.*

110 KM FROM GURGAON | 70 KM FROM BHIWADI | 40 KM FROM BEHROR



## Cross Point Mall, Alwar

Cross Point Mall will feature national and international brand showrooms, high-end merchandise shops, reputed anchor stores and an all encompassing hypermarket. The mall will offer a wide variety of multi cuisine restaurants, fast food joints and coffee shops.

Cross Point Mall aims to be the largest shopping mall in Alwar. With 7 floors dedicated to retail and entertainment, it will be an architectural and commercial landmark in Rajasthan.

The mall will be complete with well-equipped convenience facilities to create a grand retail experience for all. The contemporary front façade will face the main road - a landmark in the heart of town.

**The architects for this space are Design Forum International - a team of 90 professionals with strategic alliances abroad as well as within the country.**



A day view of the Cross Point Mall







SHOPS & SHOWROOMS | HYPERMARKET | INTERNATIONAL BRANDS | KIDS ZONE





DEPARTMENTAL ANCHORS

| DESIGNER WEAR

| JEWELLERY & ACCESSORIES

| HOME STORE

## LEVELS

Hypermarket on lower ground floor

5 floors of retail - ground, upper

ground,

1st, 2nd and 3rd floors

Multi cuisine food court on 4th floor

Speciality cafés and fine dining

## DESIGN

All shops face the atrium

High frontage for showrooms

Large space for hypermarket

Well planned architecture



MEN'S FASHION



KIDS BRANDS



ELECTRONICS



GROCERIES & SUPPLIES

## CONVENIENCE

Wide corridors

High speed escalators

Capsule elevators

Grand frontage of 212 ft.

2 level basement car parking

## SECURITY

100% power backup

Centrally air conditioned

24 hr security

Fire fighting alarm system

Earthquake resistant R.C.C. framed structure



SPECIALITY RESTAURANTS

| CAFES & FOOD COURT

| RECREATIONAL SPACES

| ESCALATORS



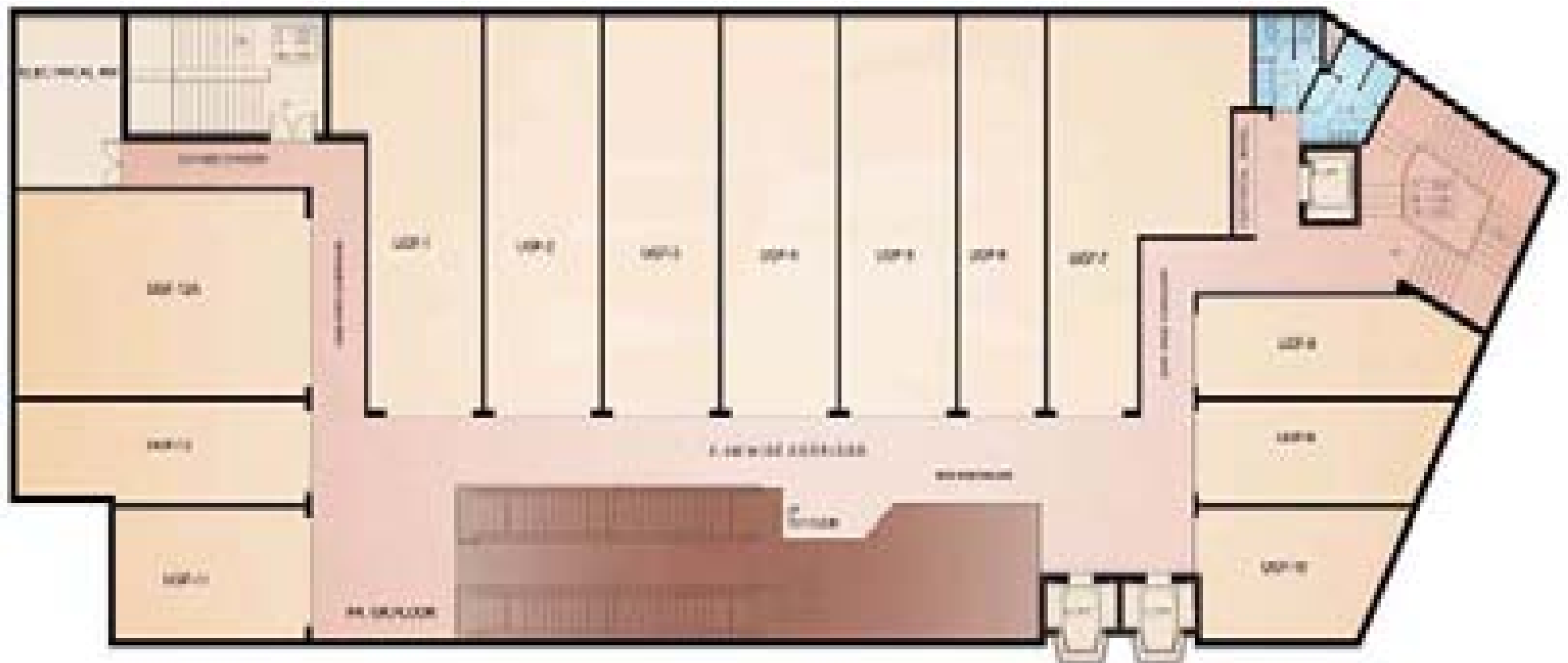
*Lower Ground Floor* - HYPERMARKET



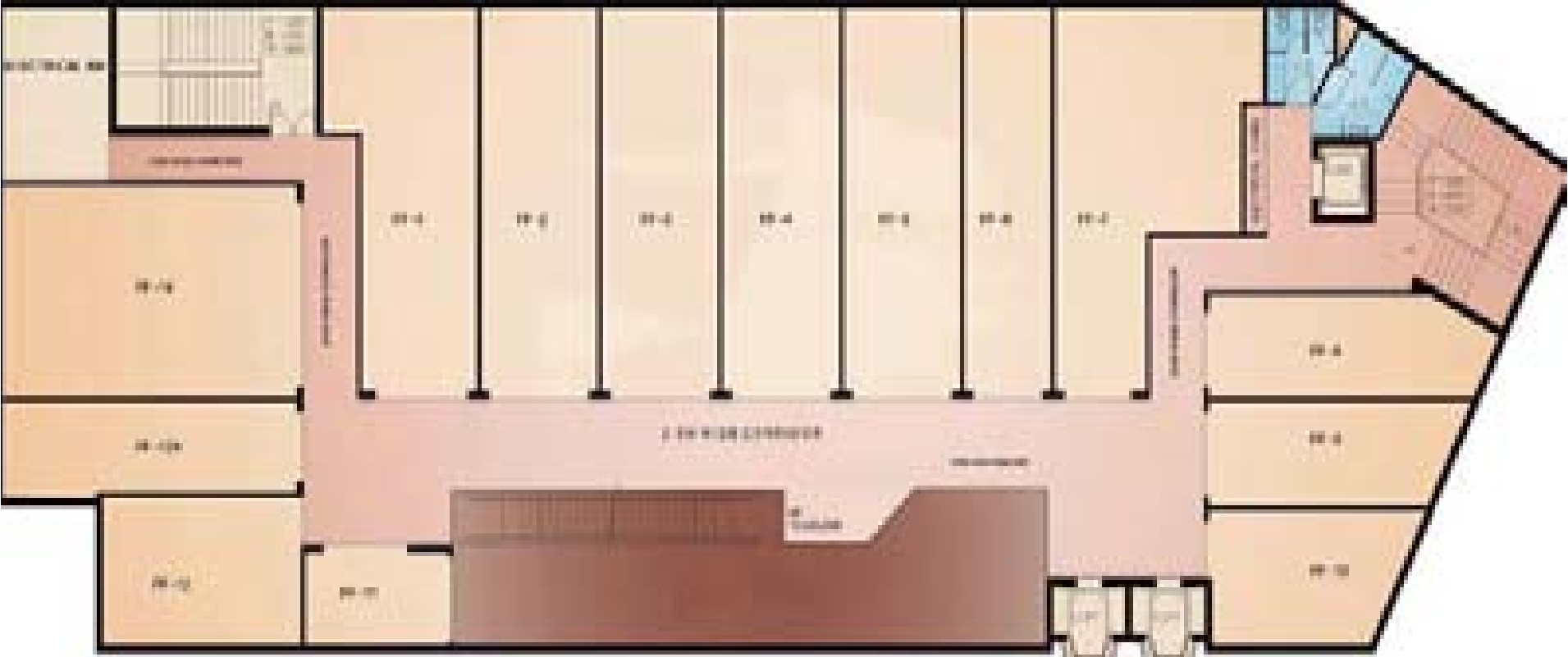
## Ground Floor - RETAIL ANCHORS



*Upper Ground Floor* - WOMEN'S FASHION & DESIGNER SHOWROOMS

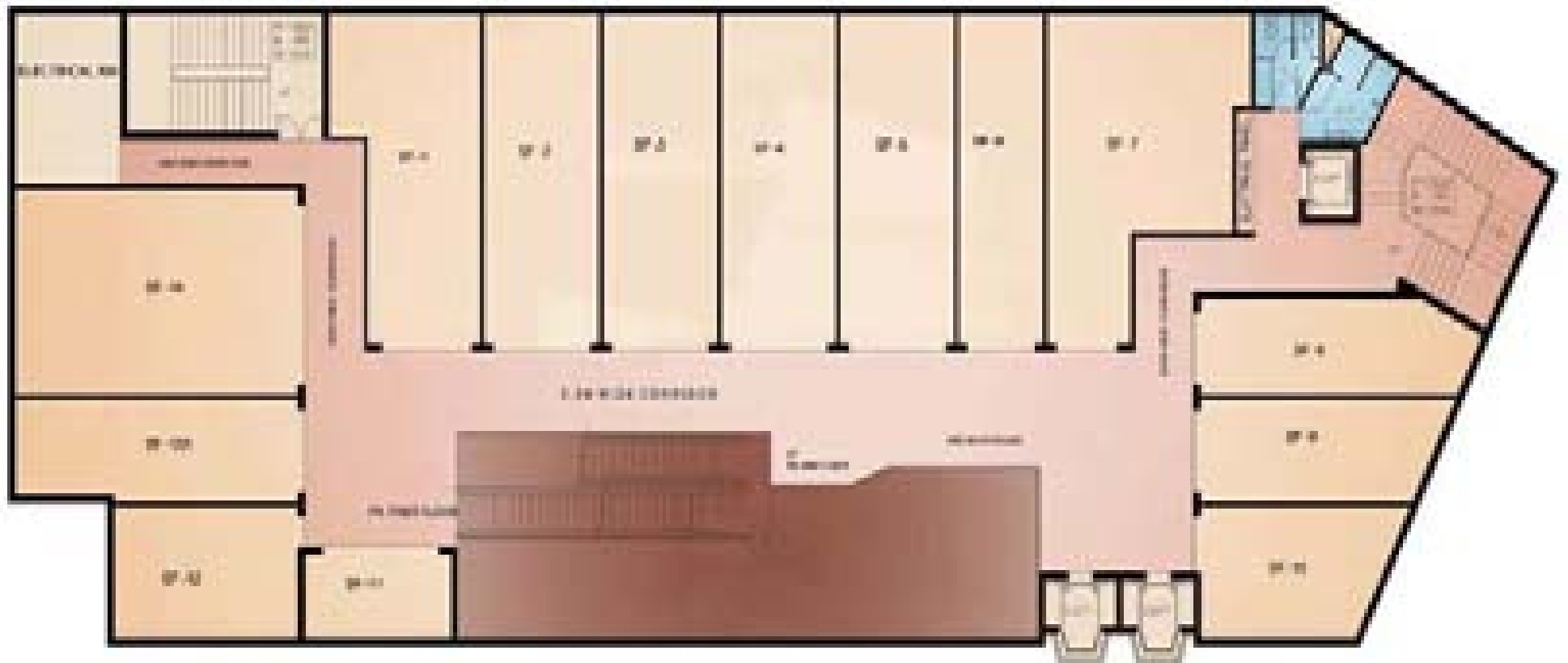


*First Floor* - KIDS INTERNATIONAL & NATIONAL BRANDS

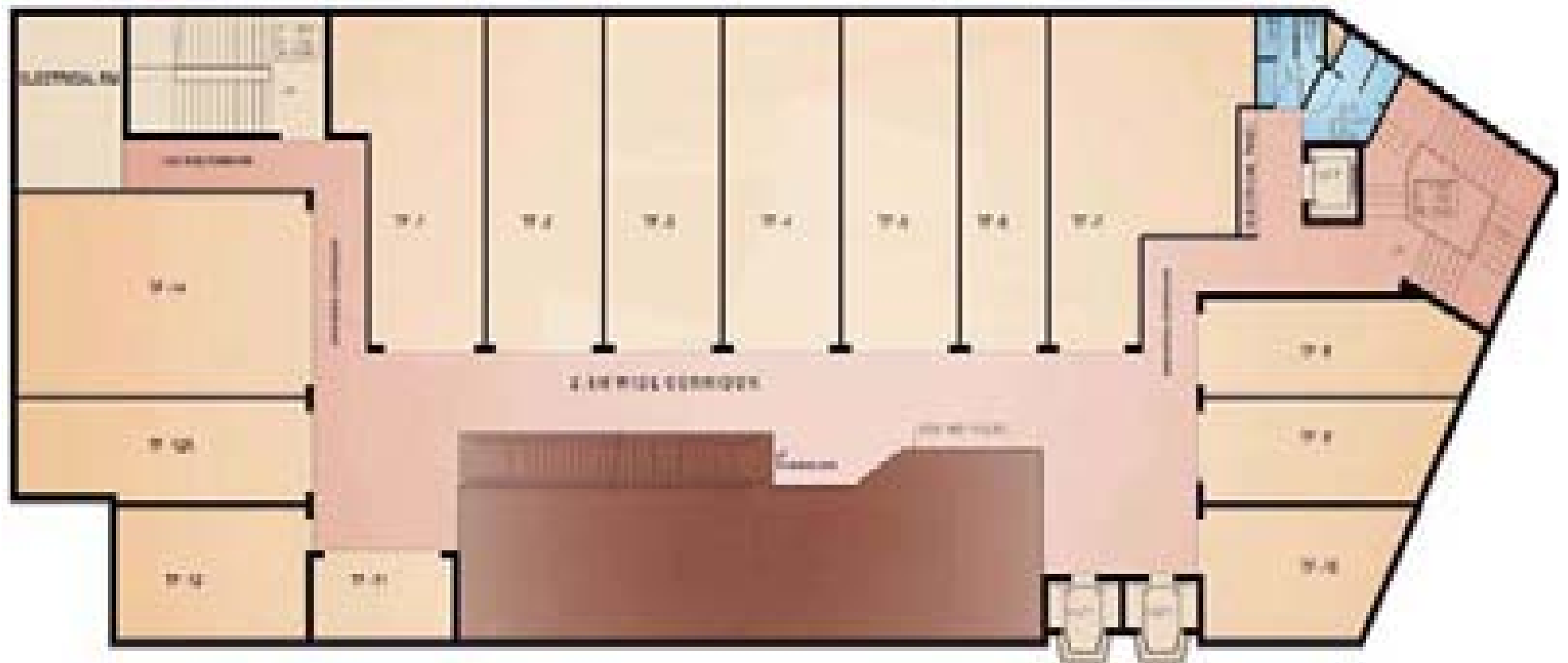




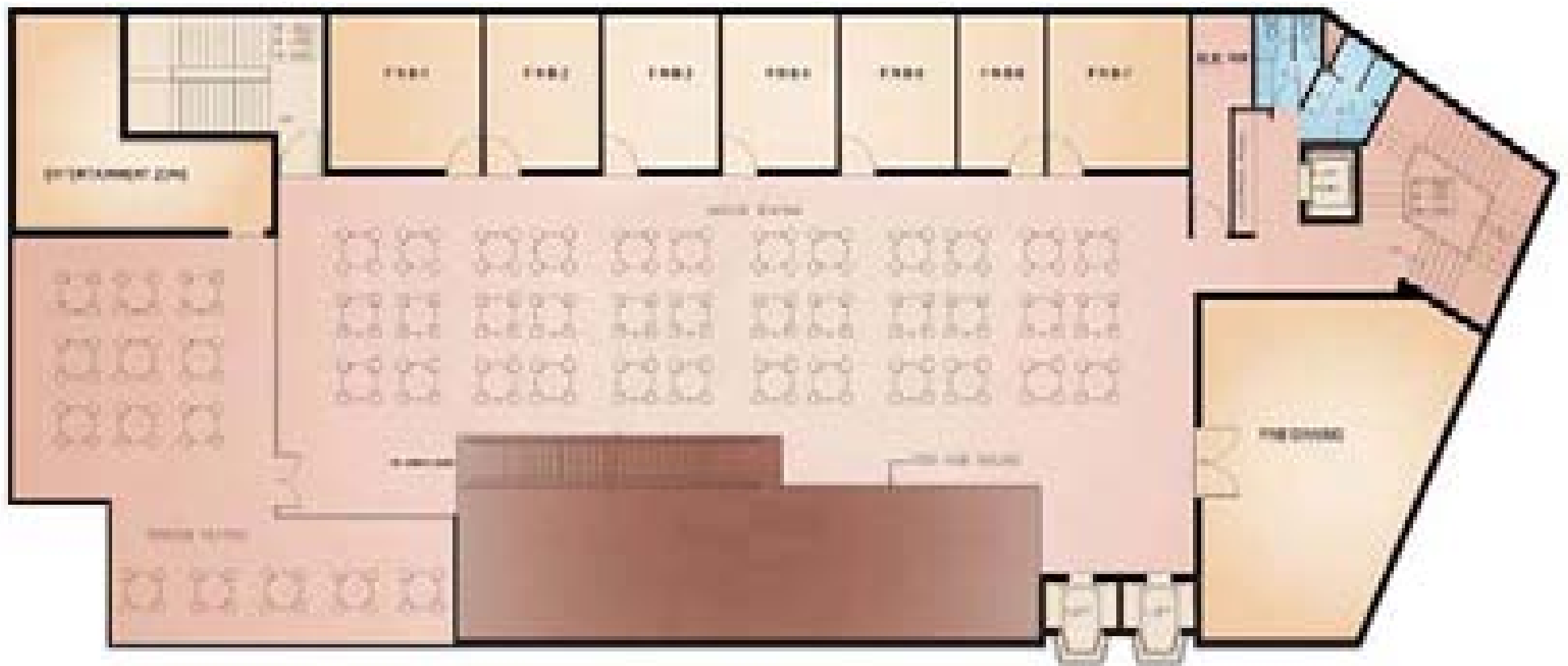
*Second Floor* - MEN'S INTERNATIONAL & NATIONAL BRANDS



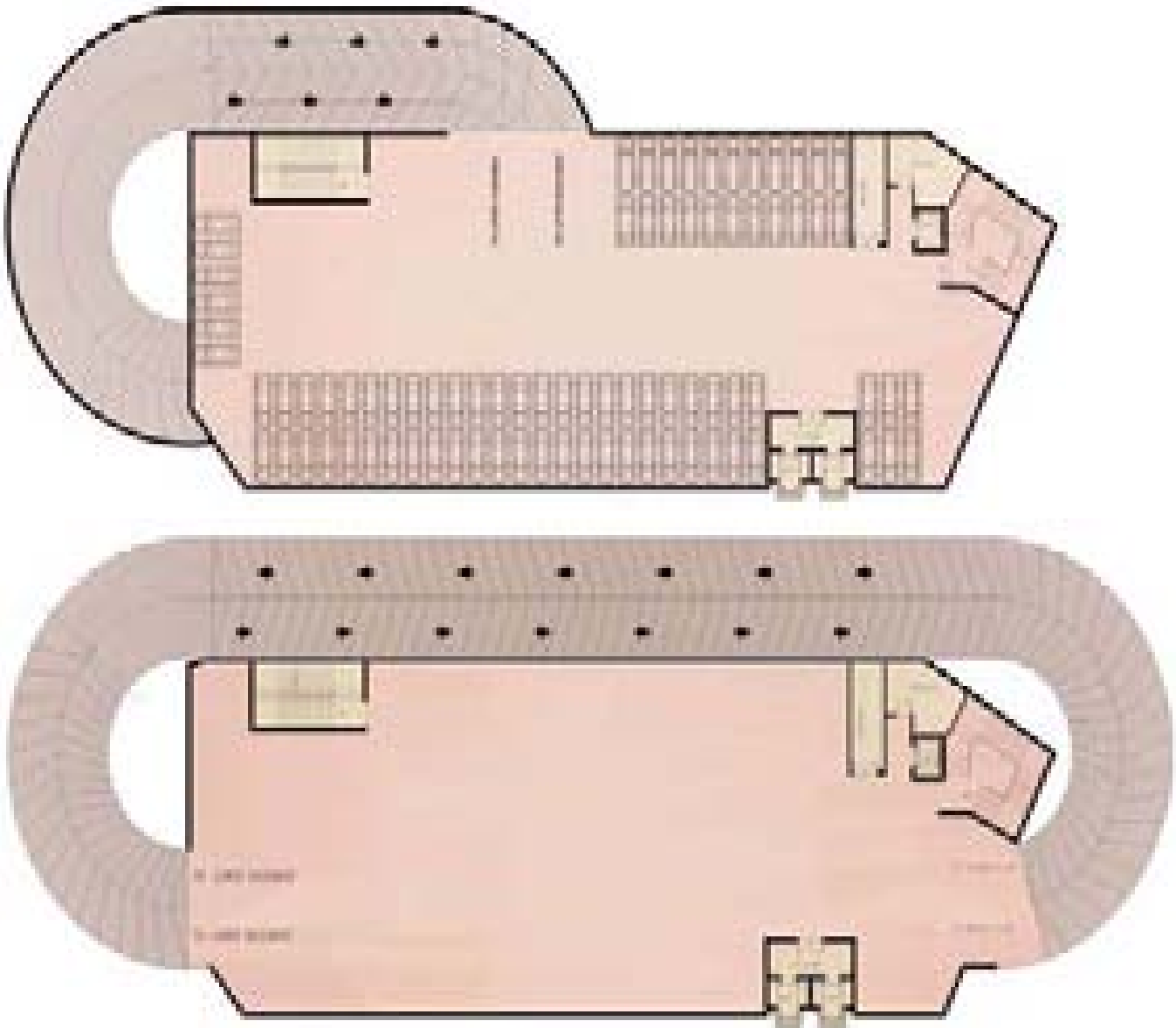
*Third Floor* - HOME ACCESSORIES & ELECTRONICS



*Forth Floor* - FOOD COURT & FINE DINING



*Basement (Upper and Lower) - PARKING*



## R-Tech Developers

The R-Tech name is synonymous with trust, quality and reliability. We believe in combining the strength of experience with the dynamic needs of the future. R-Tech aims to make a mark in the retail infrastructure of the country, touching the lives of millions across metros and urban centres. For now, R-Tech invites you to be part of the largest shopping mall in Alwar.

Cross Point Mall houses a variety of formats to fit the needs and interests of your business, whether in the field of retail, commerce, recreation, leisure or hospitality. International standards of quality combined with world class services and amenities will create larger footfalls, where families can spend the day at the mall, to fulfill all their needs and interests. Cross Point Mall will be a landmark in Alwar, and will offer a sound business opportunity with a rewarding investment potential.



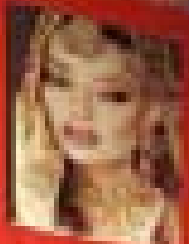
R-Tech's ongoing project is the largest mall in Bhiwadi - Capital Mall, a 2.5 lac sq.ft. project that covers a supermarket, anchor stores, food courts and restaurants, as well as a multiplex.

DISCLAIMER - The layout plans, specifications & facilities mentioned and shown in the brochure are subject to statutory & other approvals and thus can change. The visuals used are for reference & not pictures of actual facilities. The leaflet is purely conceptual & not a legal offering. Brand names appearing in the brochure are for artwork purpose only. Further in the interest of maintaining high standards, the company/architects reserves the right to modify any detail /specification/features mentioned herein. Please refer to application form for term & conditions.

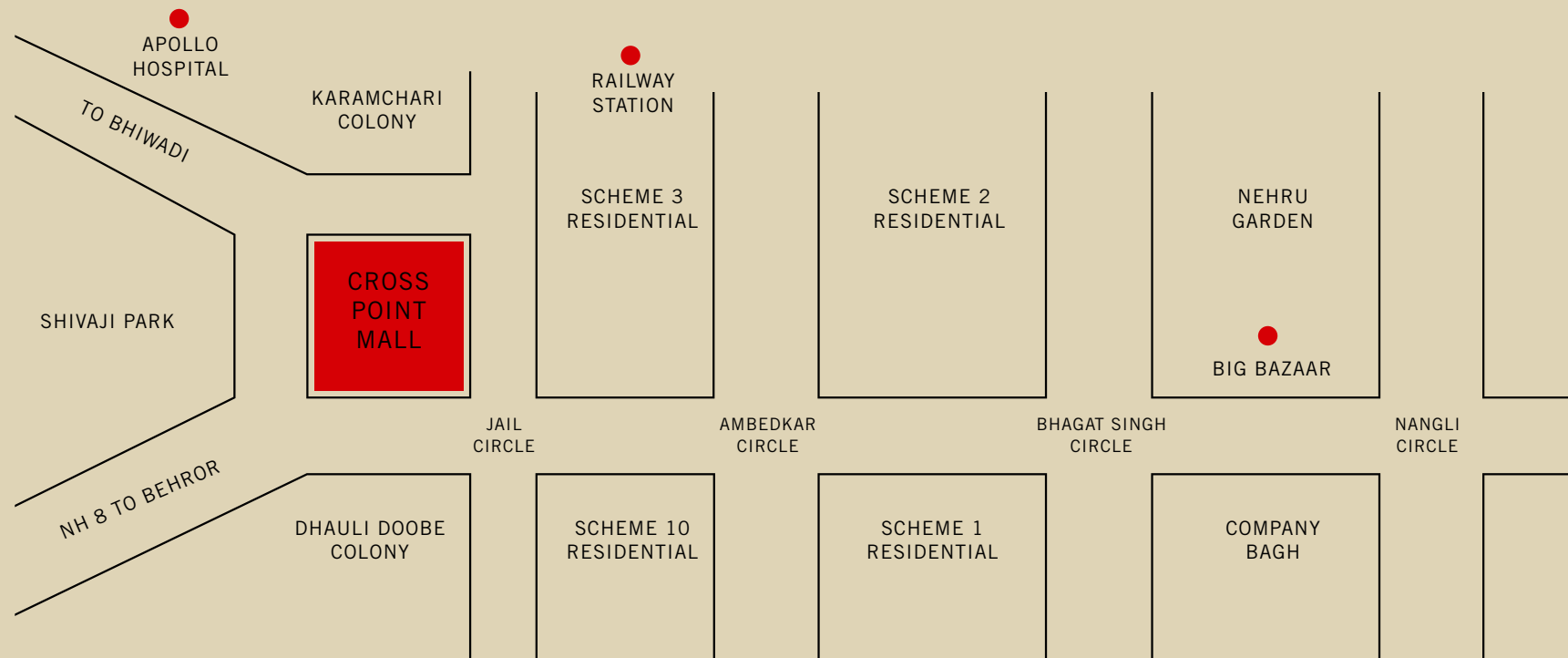


ROSS POINT MALL

ROSS POINT MALL



## Location Map of Cross Point Mall, Alwar



HYPERMARKET / RETAIL / FASHION BRANDS / JEWELLERY / RESTAURANTS



## R-TECH DEVELOPERS PVT. LTD.

Corporate & Registered Office

G 314 - 316, First Floor, Sushant Shopping Arcade  
Sushant Lok I, Gurgaon 122002, Haryana

tel +91 124 404 5300 / 5400 / 5700 fax +91 124 404 4200

mob +91 9971922112 / 113 / 114 [rtechdevelopers@gmail.com](mailto:rtechdevelopers@gmail.com)

[www.rtechdevelopers.com](http://www.rtechdevelopers.com)