



ALWAR • BEAWAR • BEHROR • BHIWADI • BIKANER • JAIPUR • JODHPUR • KOTA • NEEMRANA

www.rtechgroup.co.in

Follow us

Registered Office: Plot No. 44, First Floor Sector-44, Gurgaon-122001, Haryana
Site office: Capital Arcadia, Main Alwar bypass road, Bhiwadi - 301019, Rajasthan

CAPITAL ARCADIA (BHIWADI) RERA REGN. NO: RAJIP/2018/701

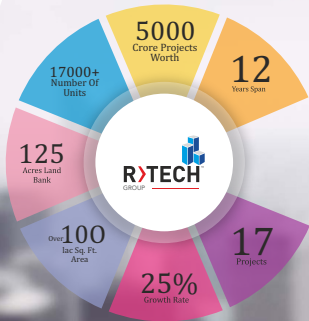
All the documents related to the said project are duly uploaded on www.rera.rajasthan.gov.in and the prospective buyer(s) can verify the same.

Disclaimer: The visual representation shown in this brochure are purely conceptual and for reference only and does not resemble any building structure and shall have no bearing in any manner of booking made in the project and the developer reserves all rights in this regard. This brochure is not a legal document.

 R>TECH
**CAPITAL
ARCADIA**
MAIN ALWAR BY PASS ROAD • BHIWADI

VISTAS OF NEW OPPORTUNITIES





SURGING AHEAD WITH CONVICTION

R-Tech Group is one of the most rapidly growing business conglomerate today with diversified inter ests across Commercial, Residential, Townships & Retail segments of the real estate industry.

After years of rich market experience & presence, the R-Tech Group, today has more than 17 projects spread across Bhiwadi, Alwar, Behror, Neemrana, Jaipur, Bikaner, Kota, Jodhpur & Beawar (Ajmer) and also coming soon in the city of Udaipur & Bhilwara, which not only gives the Group a vast foot print in North India but also a multi-faceted outlook.

ADVANTAGE R-TECH

Capital Arcadia is a contemporary project which not only comes with top-end quality assurance but more importantly the promise of on time delivery, as is evident from the impeccable delivery track record of the Group.

What's more, the entire structure of Capital Arcadia is being made to be secure against earthquakes, and other physical damages using the very latest in technology.

OUR HALLMARKS



CAPITAL ARCADIA. A NEW SAGA IN BHIWADI

The R-Tech Group brings to you Capital Arcadia, a star commercial Project in Bhiwadi. This beautifully designed highstreet market project is spread over an area of 5493.70 Sq. Mt. and is intended to not only meet the business needs of the people of Bhiwadi but various other commercial needs too. The project has been designed by "RAAS Architects", one of the top Architects and Interior Designers in order to ensure world class standards.

Capital Arcadia boasts of having a state of the art design and all conceivable modern amenities & conveniences. In addition, the project also provides for a lot of other facilities like multi-level parking, 100% power backup, 24x7 CCTV surveillance to state a few.

Therefore, the project is likely to be amongst the most preferred place in the city of Bhiwadi.

MAKING BHIWADI PROUD



CAPITAL ARCADIA

KEY PROJECT HIGHLIGHTS

Spread Over An Area of 5493.70 Sq. Mt.

Over 260 Feet Frontage

1st Commercial Highstreet Market of its Kind on main Alwar bypass road

9 Levels Of Retail cum Office Complex

426+ Multi Level & Open Area Parking

Hypermart With Home Furnishing

637 Units

Landscaped Open Plaza & Café

World Class Gymnasium & Spa

Modern Fire Safety Measures

Power Back-Up

High Speed Escalators & Lifts

First Aid Centre



LOCATION & CATCHMENT

In Immediate Proximity of about 25000 Residential Units

Capital Arcadia is strategically located on main Bhiwadi- Alwar bypass road. The combination of an opportune location and top-class facilities is expected to attract heavy footfalls in the area.

Also what gives Capital Arcadia an edge is that it is set amidst high density residential colonies, thereby ensuring a sustained high rate of footfalls from a captive catchment area.





Mini Shops

Ideally Suited For:

- Sunglasses/Opticals
- Ice Cream Vends
- Express Saloons
- Books/Stationary Marts
- Art/Sculpture Vends
- Ladies Bags
- Bakes & Confectionary Vends
- Beauty Parlours
- Tattoo Makers
- Fast Food Vends
- Florists
- ATM Vends
- Juice Corners
- Keymakers
- Photo Frames



SHOPS

Ideally Suited For:

- Cosmetics Stores
- Dry-Cleaning Shops
- Grocery Stores
- Departmental Stores
- Mobile Phone Store/Services
- Kids/Gents/Ladies Wear Stores
- Restaurants
- Travel Bags/ Luggage Stores
- Jewellery Shops
- Electronics Stores
- Foot Wears Shops
- Medical Store/Chemist
- Spa & Saloon
- Fitness Centre
- Gaming Parlours
- Home Furnishing Stores
- Boutique Shops



OFFICES

Ideally Suited For:

- Medical Clinics
- Chartered Accountants
- Tour & Travel Agencies
- Real Estate Agents
- Banks
- Insurance Companies
- Packers & Movers
- Coaching Classes
- Construction Companies
- Cooking Gas Agencies
- IT Companies
- Security Agencies
- Architects
- Advocates
- Passport/Pan/Voter Card Services
- Laboratories
- Recruitment Agencies

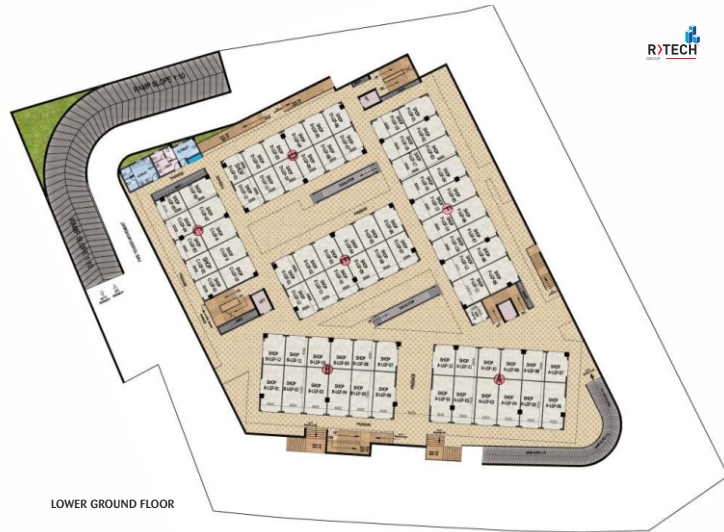
FLOOR PLANS



SECOND BASEMENT PLAN



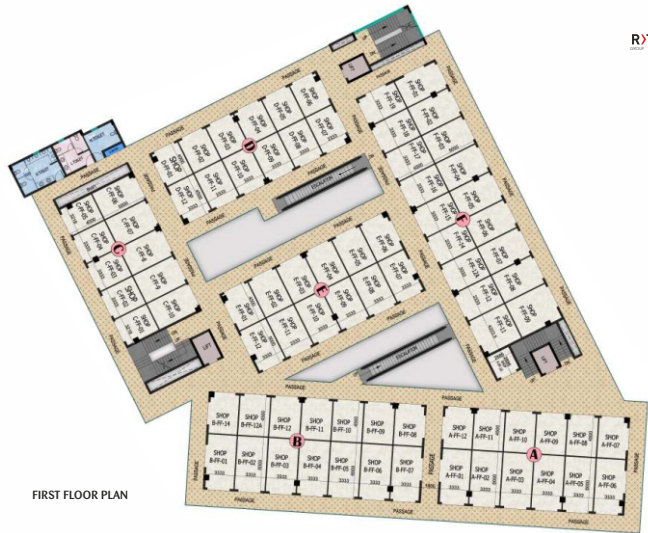
FIRST BASEMENT PLAN



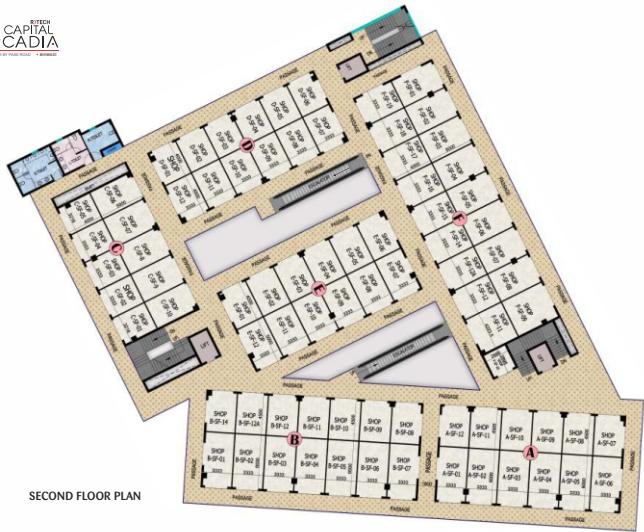
LOWER GROUND FLOOR



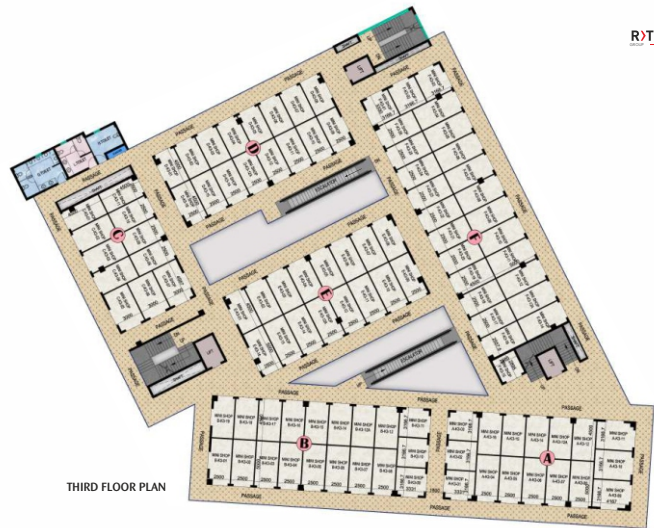
GROUND FLOOR PLAN



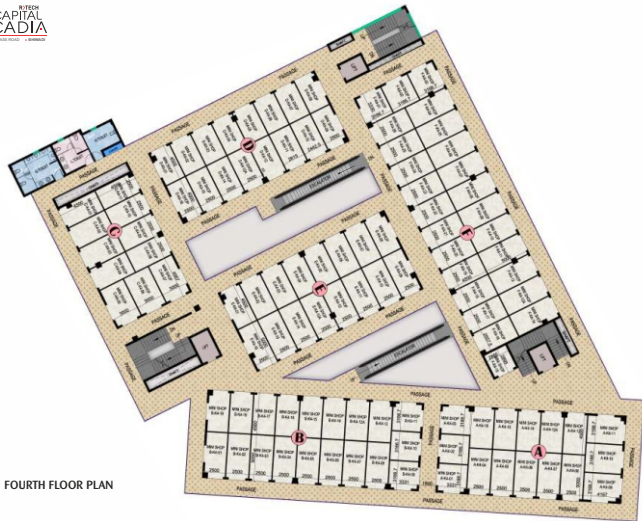
FIRST FLOOR PLAN



SECOND FLOOR PLAN



THIRD FLOOR PLAN



FOURTH FLOOR PLAN

SPECIFICATION

STRUCTURE:	Reinforced cement concrete (RCC) controlled framed structure & Brick wall partitions with Earthquake Resistant technology.
COMMON AREAS:	
Flooring	Combination of Granite Stone or Ceramic Tiles or Hard wearing floor Material or equivalent.
Walls	Combinations of Cement-sand Plaster with suitable long-lasting Paints.
Toilets	Flooring-Marble/Granite/other suitable stones/Anti skid Ceramic tiles Walls- Ceramic wall tiles up to 7 feet height and acrylic emulsion paint on rest plastered surface. Ceiling - False ceiling (Gypsum/POP/Accoustical tile) Sanitary ware-Branded EWC, Wash basin, Urinals, Mirrors & Taps Door shutter- Laminated wooden flush door shutter with wood/MS frame
Vertical Circulation	Lifts and Escalators
Exterior Finishing	Combination of cement Plaster and Exterior Paint/Texture Paint or equivalent.
Salient Features	Power Back-up, External Lighting, Centralized security system, Parking, Water supply, Arrangement for Disposal of Storm & Sullage water.
SPACE/UNIT/SHOP/KIOSK	
Flooring	Vitrified Tiles or equivalent
Walls	Plain Cement-sand Plaster finished with white wash
Ceiling	Exposed concrete finished with white wash
Life Safety	Wet Riser/ Hose Reels, Sprinklers, Emergency lighting and Fire detection system connected to the common system of the building in conformity to Fire safety norms and smoke extraction system.
Shop Front	MS Rolling Shutter painted with Enamel paint
Electric Connection	Electric point up to Shop Main distribution board.
Plumbing	01 wet point for Domestic water supply and waste water for Each Shop only.
OFFICE:	
Flooring	Vitrified Tiles
Walls	Plain Cement-sand Plastered surface finished with white wash
Ceiling	Exposed concrete finished with white wash
Doors	Flush Doors with Wooden /MS Chowkhat
Electric Connection	Electric point up to Main distribution board of Office.
Toilet	Flooring-Anti skid Ceramic tiles or equivalent Walls- Ceramic wall tiles up to 7 feet height and suitable paint on rest plastered surface. Ceiling - Exposed concrete Surface Plumbing-Points for EWC, Wash basin, Urinals & Taps Door shutter- Flush door shutter with wood/MS frame

R)TECH
CAPITAL
HOMES
BEAWAR
A JV Project of R-TECH Group & H.L Group



ममूखयंी जन आवास योजना - 2015
EWS एव लIG हलरलसगं
Completion year: 2023
No. Of Units: 342 (Tower A,B & C)
RERAREGN:NO-RAJ/P/2018/616

R)TECH
CAPITAL
HIGHSTREET
BEAWAR
A JV Project of
R-Tech Group & Gurbachan Singh & Others

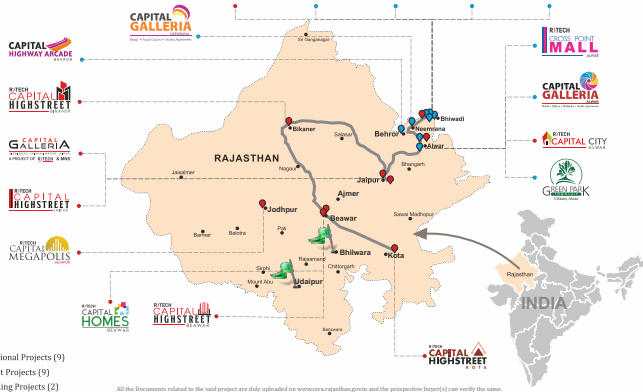


Completion Year: 2023
Plot Area: 5167.87 Sq mtr
Total No Of Units: 459
RERAREGN:NO-RAJ/P/2018/803

R)TECH
CAPITAL
HIGHSTREET
KOTA



Completion Year: 2024
Plot Area: 3444 Sq mtrs
Total No Of Units: 286
RERAREGN:NO-RAJ/P/2019/992





RTECH
RETAIL

Not the one to rest on its laurels the R-Tech Retail - A subsidiary of R-ēch Group continues to expand its horizons by entering into the fast growing retail segment by way of a mix of the franchise model as well as launching its own retail brands

ASSOCIATED BRANDS
