

## About R-Tech Group

### Soaring on a growth path with proven success & leadership

R-Tech is one of the most rapidly growing business conglomerate with diversified interests across **Commercial, Residential, Townships & Retail** segments of the real estate arena.

After having established in the year 2007, within a short span of 11 years the R-Tech Group has today gone on to become a multifaceted organization posting an impressive growth rate & turnover. Growing at an average rate of 25% year on year, the company has today transformed into an over INR 4000 enterprise.

The Group has mega stakes in the real estate sector where it has created world-class infrastructure spread across 10 million square feet and has plans to add more in the coming years. R-Tech continues to grow and chart new territories under the able stewardship of the Group's Managing Director Mr. Rajesh Kumar Yadav, Mr. Rajinder Kumar Yadav and it's Board of Directors.



#### R-TECH GROUP

Site Office: Capital Greens, Baba Mohan Ram Mandir Road, Bhiwadi, Rajasthan.  
Corp. Office: Plot No.: 44, 1st Floor, Sector - 44, Gurgaon, Haryana - 122002  
Phone: +91 124 4725300 - 349  
Email: sales@rtechgroup.co.in | Web: www.rtechgroup.co.in



All the documents related to the said project are duly uploaded on [www.rera.rajasthan.gov.in](http://www.rera.rajasthan.gov.in), and the prospective buyer(s) can verify the same.  
**RERA REGISTRATION: RAJ/P/2017/075**

Disclaimer: The visual shown and represented herein are on conceptual basis only, and shall have no bearing, in any manner, of booking to be made in this Project and the Developer reserve all rights, in this regard. This brochure is not a legal document.



# CAPITAL GREENS

## B H I W A D I

LIVE GREEN, LIVE BLISSFULLY

Sep. 2013 • www.ma-associates.com







## Live Green, Live Blissfully

R-Tech Group established its first footprints in the commercial and retail arena in Alwar & Bhiwadi with the opening of Cross Point Mall & Capital Mall, respectively. Within a short span, the Group has not only created benchmarks in this business, but has become a household name in Alwar and Bhiwadi.

After the successful development of the commercial projects, R-Tech Group has now entered into the residential segment, keeping in mind all the interests of end-users from all walks of life. Its first residential offering is a delightfully beautiful group housing project called **“Capital Greens”**.

Spread over 9.35 acres, Capital Greens is first of its kind in Bhiwadi having all facilities including Club, In-Door Games, Podium Parking, Swimming Pool, Jogging Track and a lush green Park. It is specifically targeted at our esteemed customers and end users across Delhi (NCR), Gurgaon, Bhiwadi & Alwar. The site layout is unique as it plans green spaces around all its towers that are developed into breathtaking parks to give this township a vast green cover. The homes too are beautifully designed with adequate power supply, 24/7 water and round-the-clock security to give immense pleasure and satisfaction to its residents who will finally get a chance to lead a good quality life.

Capital Greens offers you a choice of 1, 2 & 3 BHK apartments. It is closely surrounded by retail spaces and commercial midpoint likewise Capital Mall, Capital Highstreet and Capital Galleria, that gives an edge over any other residential projects, in this entire area and of course, in NCR as well.



**CAPITAL GREENS**  
B H I W A D I





**CAPITAL GREENS**  
B H I W A D I

### Highlights

- ✓ Secured Complex
- ✓ 1, 2 & 3 Bedroom Apartments
- ✓ Badminton Court
- ✓ Kids Play Area
- ✓ Fountain
- ✓ Theme Garden
- ✓ Jogging Track
- ✓ Club
- ✓ Swimming Pool
- ✓ Car Parking



Artistic View of Entrance





Artistic View

### Distance Chart

- Dhaula Kuan (Delhi) 55 Minutes
- IGI Airport 50 Minutes
- Gurgaon 30 Minutes
- IMT Manesar 20 Minutes
- Dharuhera 05 Minutes
- Neemrana 40 Minutes
- Jaipur 2.5 Hours
- Rewari Railway Station 15 Minutes
- DTC Bus Service available



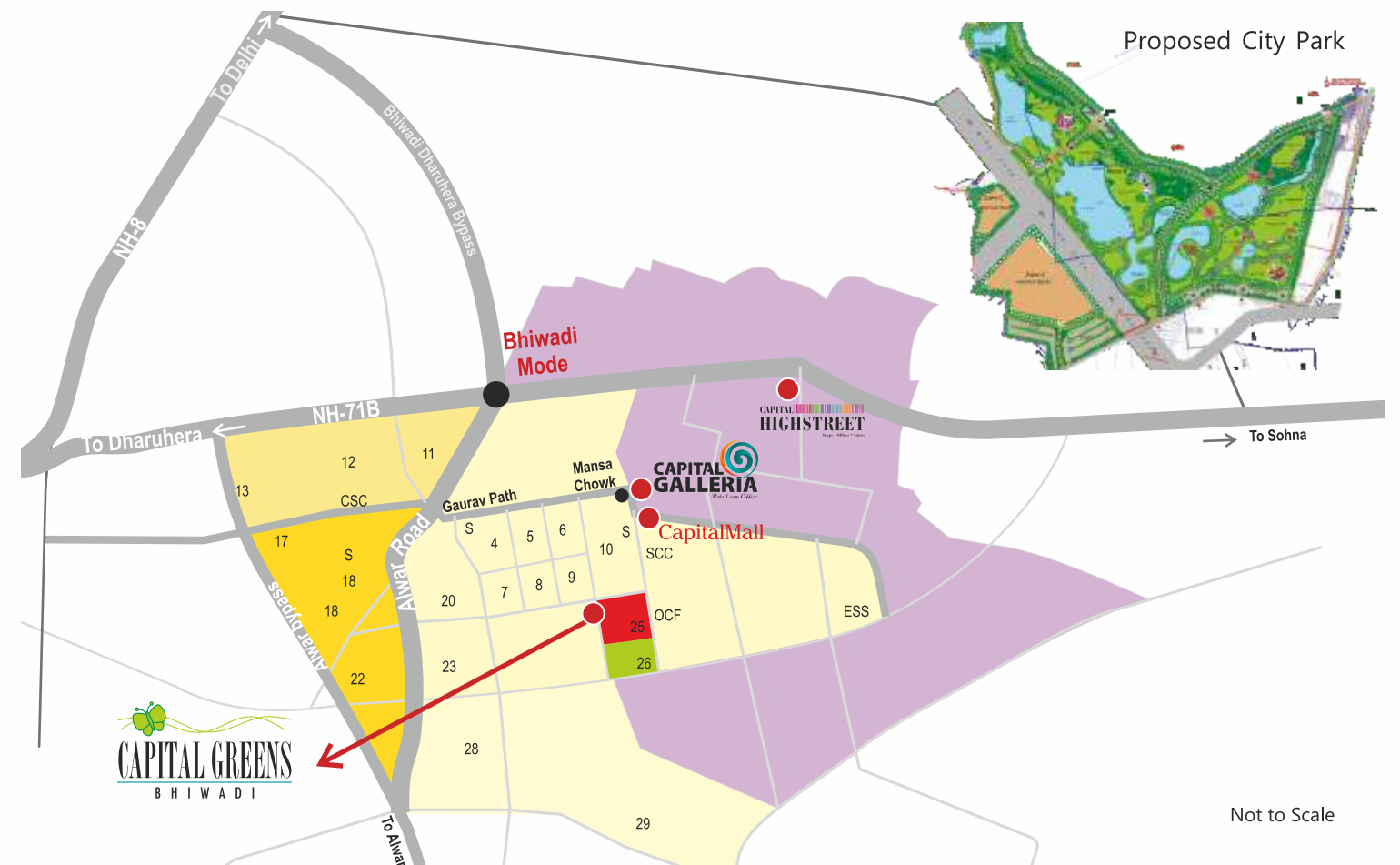
### Location

Capital Greens is strategically located within easy reach of NH-71 B & NH-8 in the up-coming township of Bhiwadi (Rajasthan) within the National Capital Region (NCR). Bhiwadi is not only the fastest developing destination for residential, commercial and Industrial segment but has easy accessibility to Delhi, Gurgaon, Alwar & Jaipur. It is just 30 minutes drive from Gurgaon and the international airport is just an hour away. This is one of the few destinations within NCR that offers properties at affordable prices which is alluring people from all walks of life including entrepreneurs and businessmen. Bhiwadi already boasts of 4 Star Hotels, Wellness Centers, well established Hospitals & Health care, Quality education centers and last but not the least Entertainment facilities. The Multiplexes, Eatries and Shopping Malls in Bhiwadi also showcase top

brands. All this is in the vicinity of Capital Greens, making it a fantastic location.

Some significant developments in connectivity and transport have made Bhiwadi a hot destination for living and investment. The 180 Kms Rapid Metro Train facility from Delhi-Gurgaon-Alwar has been initiated and finalized that will pass through Bhiwadi. Apart from this the KMP (Kundli-Manesar-Palwal) Expressway will also improve accessibility in the region.

Realizing the potential of Bhiwadi, many prominent national & international industries have moved into the industrial areas of Bhiwadi. Some of them are Honda Cars, Honda motorcycle & scooters, Saint Gobain, Pepsi, Jaquar, Bausch Lomb, Gillette India & other Bluechip companies.







## Specifications

Super Structure	:	Earthquake resistant RCC frame structure. Brick work in cement & mortar.
Bedroom	:	Vitrified Tiles.
Flooring	:	Vitrified tiles in drawing/dining. Ceramic tiles in Kitchen, Toilets and Balconies.
Doors & Windows	:	Wooden frames with painted doors. Powder coated aluminum doors & windows.
Kitchen	:	Granite top working platform. Stainless steel sink with drain board. Ceramic glazed tiles dado 2' above working platform.
Toilets	:	Non skid ceramic floor tiles, ceramic tiles upto 7' on walls. English WC. Provision of hot and cold water. Good quality of CP Fittings, Soap dish, towel rail and looking mirror.
CP Fittings	:	Jaquar or equivalent
Inside Wall Finish	:	Inside walls in oil bound distemper. POP cornice in drawing room / dining hall and all Bedrooms.
External Facade	:	Exterior in superior maintenance free finish.
Electrical	:	Copper wiring in concealed PVC conduits. Sufficient light and power points. Provision for TV and telephone point in living room and all bedrooms. Ready Internet Connectivity.



Artistic View Central Park



**Phase-1**

- Towers - C
- Towers - D
- Towers - F
- Towers - G
- Towers - H
- Towers - I
- Towers - J

**Phase-2 (Proposed)**

- Towers- A
- Towers- B
- Towers- E



**PHASE-2**

**PHASE-2**

**Legends**

1. Entry
2. Exit
3. Drop off
4. 1B+1T Unit
5. 2B+2T Unit
6. 3B+3T Unit
7. BADMINTON COURT
8. RAMP FOR PODIUM
9. FOUNTAIN
10. KIDS PLAY AREA
11. SHOPPING COMPLEX
12. THEME GARDEN
13. JOGGING TRACK
14. CENTRAL GREEN
15. CLUB
16. SWIMMING POOL
17. S.T.P.
18. CAR PARKING

Not to Scale

**Note:** The site layout plan is not a legal document. It is tentative and describes the conceptual plan to convey the intent and purpose of Capital Greens. The layout is subject to variations and modification as decided by the architect/Company.

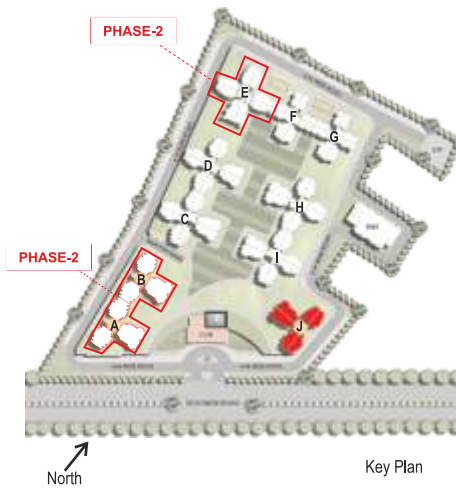




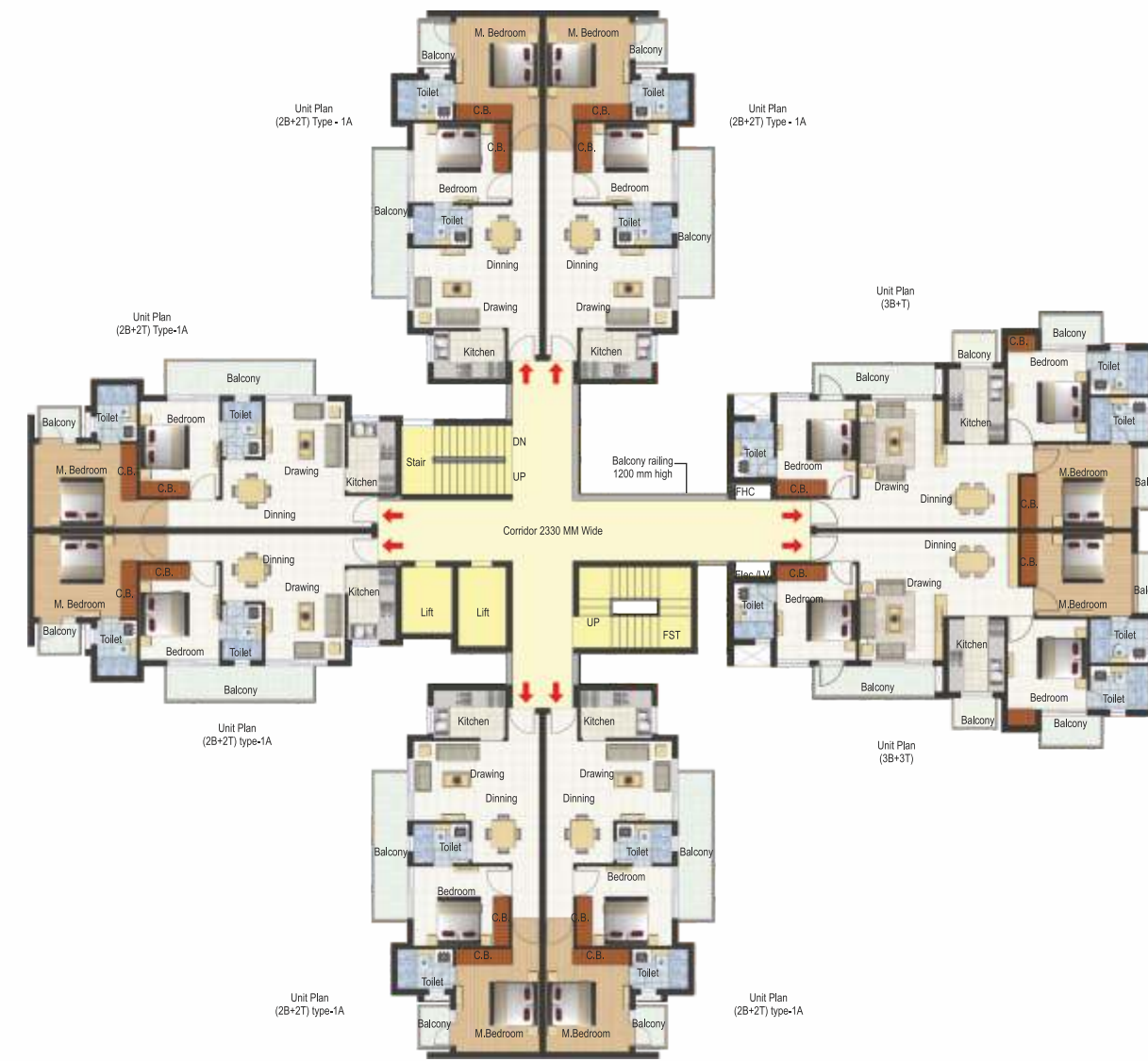
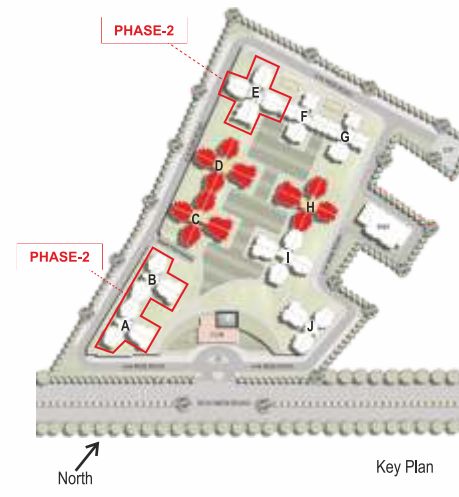
Artistic View



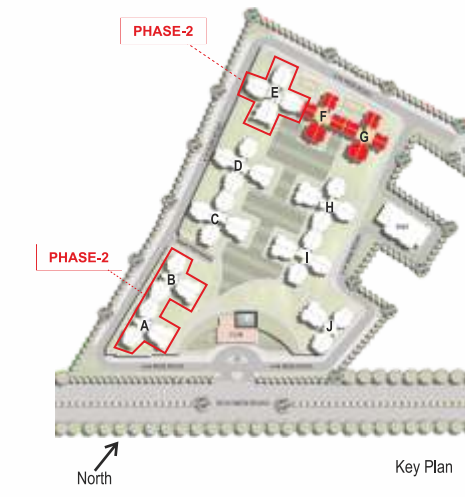
Tower Plans



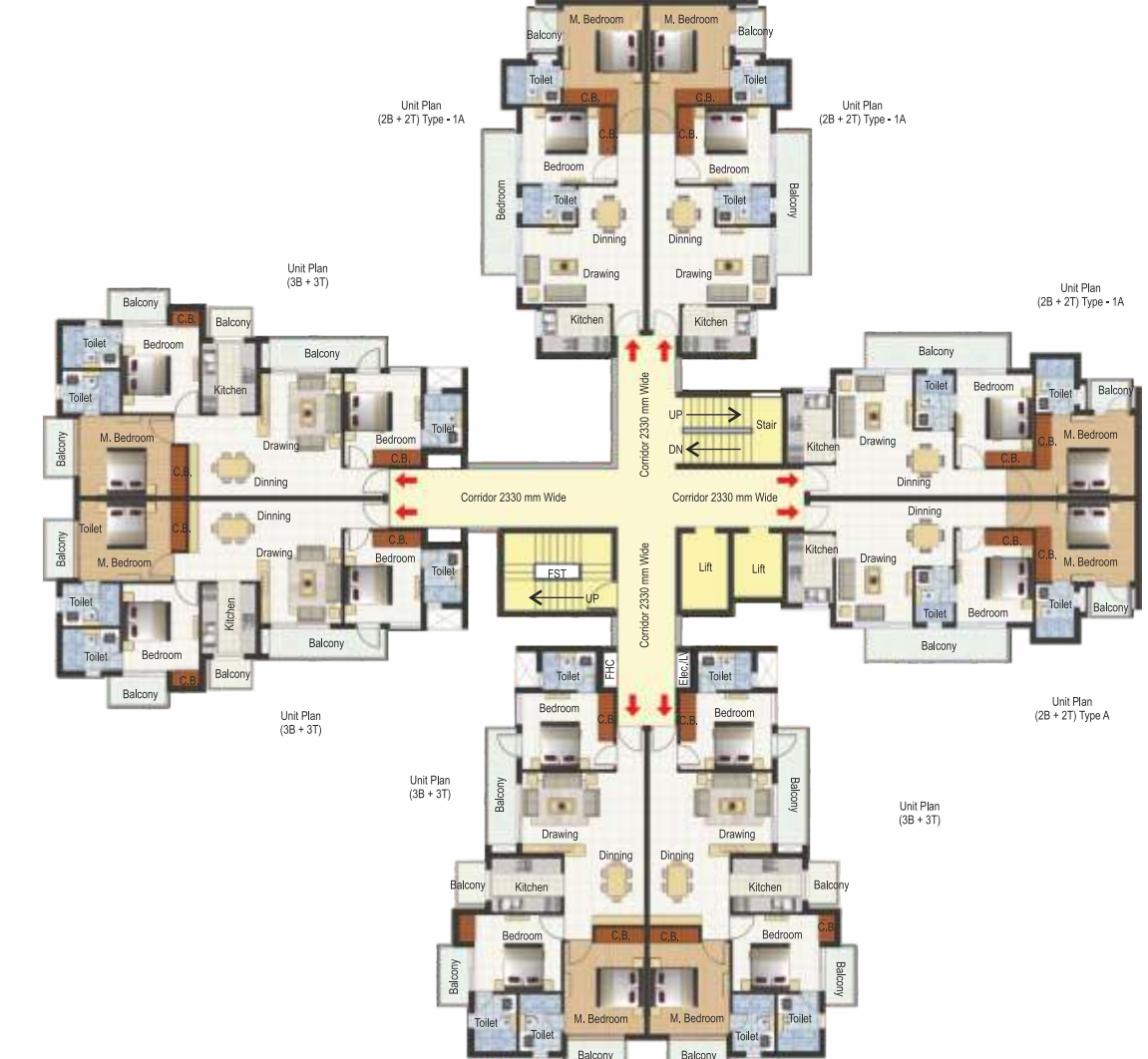
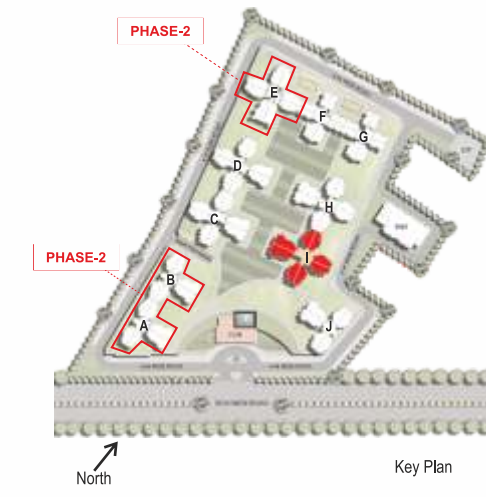
Tower J (S+14)



Tower C, D & H (S+14)



Tower F & G (S+14)



Tower I (S+14)



**Unit Plan (3B+3T) type-1  
TOWER - J**

Super Built-up Area - 1396.29 sq. ft.  
Carpet Area Of Apartments - 863.81 sq. ft.  
Carpet Area Of Balcony - 145.42 sq. ft.

**Unit Plans**



**Unit Plan (3B+3T) type-1A  
TOWER - C,D,H & I**

Super Built-up Area - 1396.29 sq. ft.  
Carpet Area Of Apartments - 863.81 sq. ft.  
Carpet Area Of Balcony - 145.42 sq. ft.



Accessories shown in the layout plan as furniture, electrical appliances, cabinets etc. are indicative and not a part of the sale offering. The floor plan is tentative and is subject to variation and modification as decided by the Company/Architect.

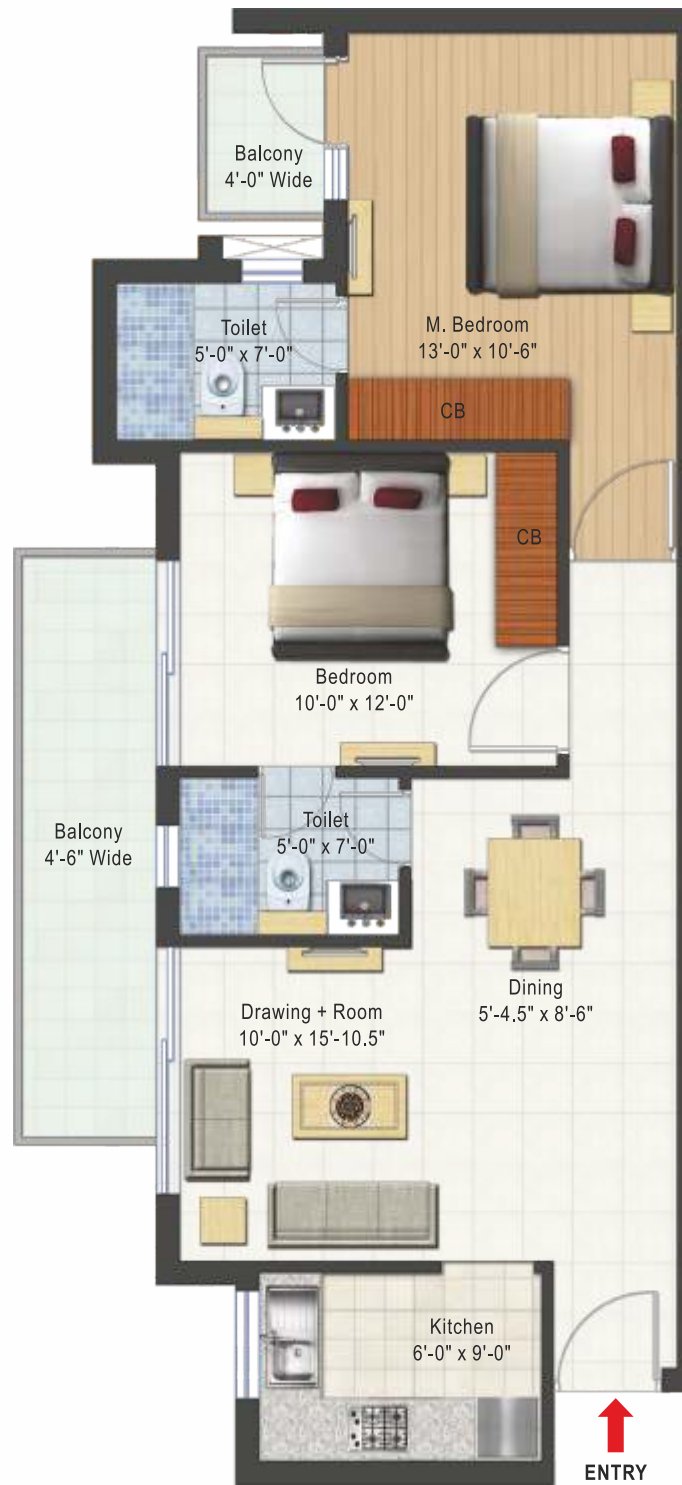
Accessories shown in the layout plan as furniture, electrical appliances, cabinets etc. are indicative and not a part of the sale offering. The floor plan is tentative and is subject to variation and modification as decided by the Company/Architect.



**Unit Plan (2B+2T) type-1  
TOWER- J**

Super Built-up Area - 1037 sq. ft.  
Carpet Area Of Apartments - 639.81 sq. ft.  
Carpet Area Of Balcony - 103.65 sq. ft.

**Unit Plans**



Accessories shown in the layout plan as furniture, electrical appliances, cabinets etc. are indicative and not a part of the sale offering.  
The floor plan is tentative and is subject to variation and modification as decided by the Company/Architect.

**Unit Plan (2B+2T) type-1A  
TOWER - C,D,H & I**

Super Built-up Area - 1037 sq. ft.  
Carpet Area Of Apartments - 631.81 sq. ft.  
Carpet Area Of Balcony - 103.65 sq. ft.



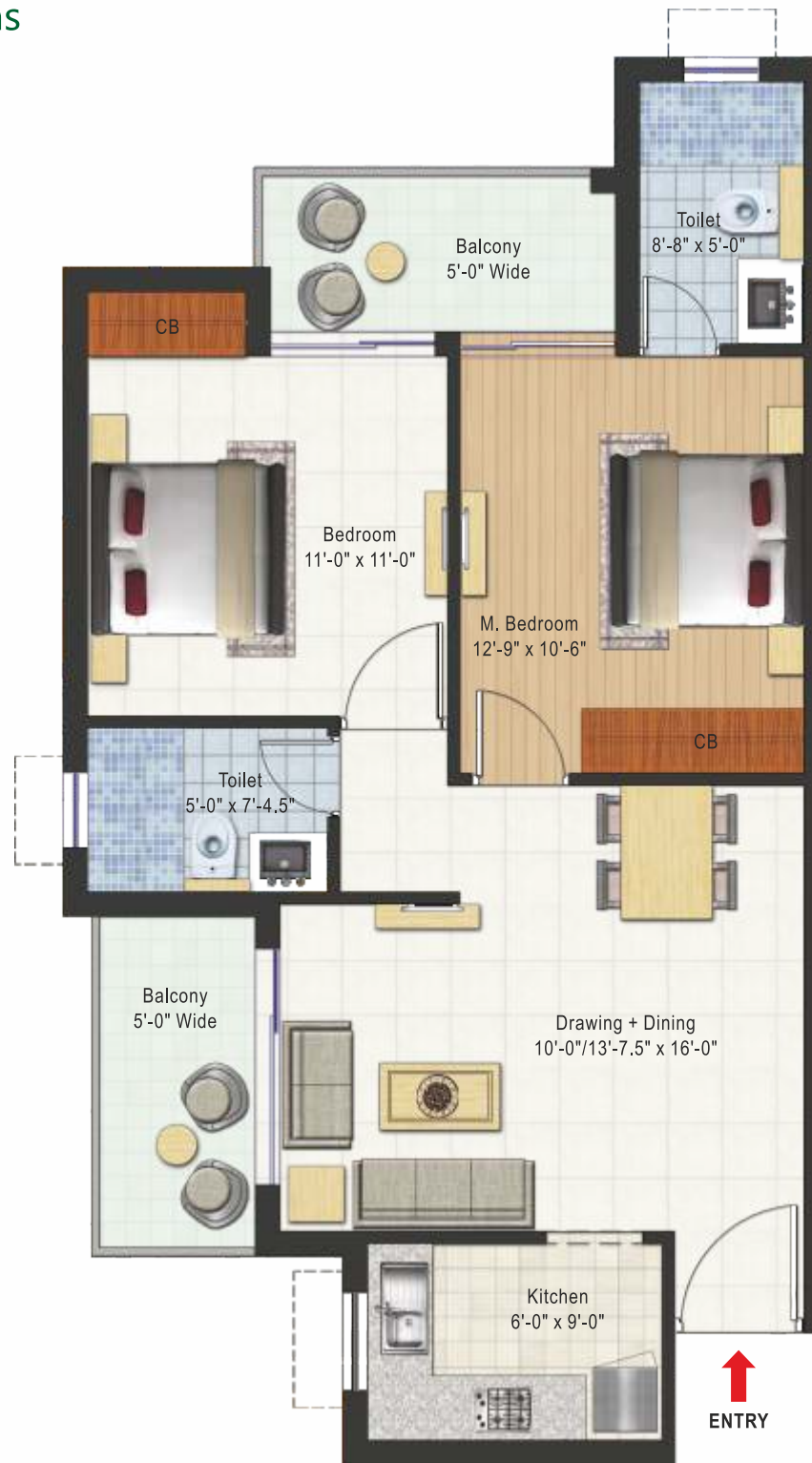
Accessories shown in the layout plan as furniture, electrical appliances, cabinets etc. are indicative and not a part of the sale offering.  
The floor plan is tentative and is subject to variation and modification as decided by the Company/Architect.



**Unit Plan (2B+2T) type-2  
TOWER - F & G**

Super Built-up Area - 1017.175 sq. ft.  
Carpet Area Of Apartments - 618.08 sq. ft.  
Carpet Area Of Balcony - 92.24 sq. ft.

**Unit Plans**



**Unit Plan (1B+1T)  
TOWER - F & G**

Super Built-up Area - 661.14 sq. ft.  
Carpet Area Of Apartments - 408 sq. ft.  
Carpet Area Of Balcony - 45.41 sq. ft.



Accessories shown in the layout plan as furniture, electrical appliances, cabinets etc. are indicative and not a part of the sale offering.  
The floor plan is tentative and is subject to variation and modification as decided by the Company/Architect.

Accessories shown in the layout plan as furniture, electrical appliances, cabinets etc. are indicative and not a part of the sale offering.  
The floor plan is tentative and is subject to variation and modification as decided by the Company/Architect.



Zest Of Creating A New World...  
...joy Of Deeds Well Done

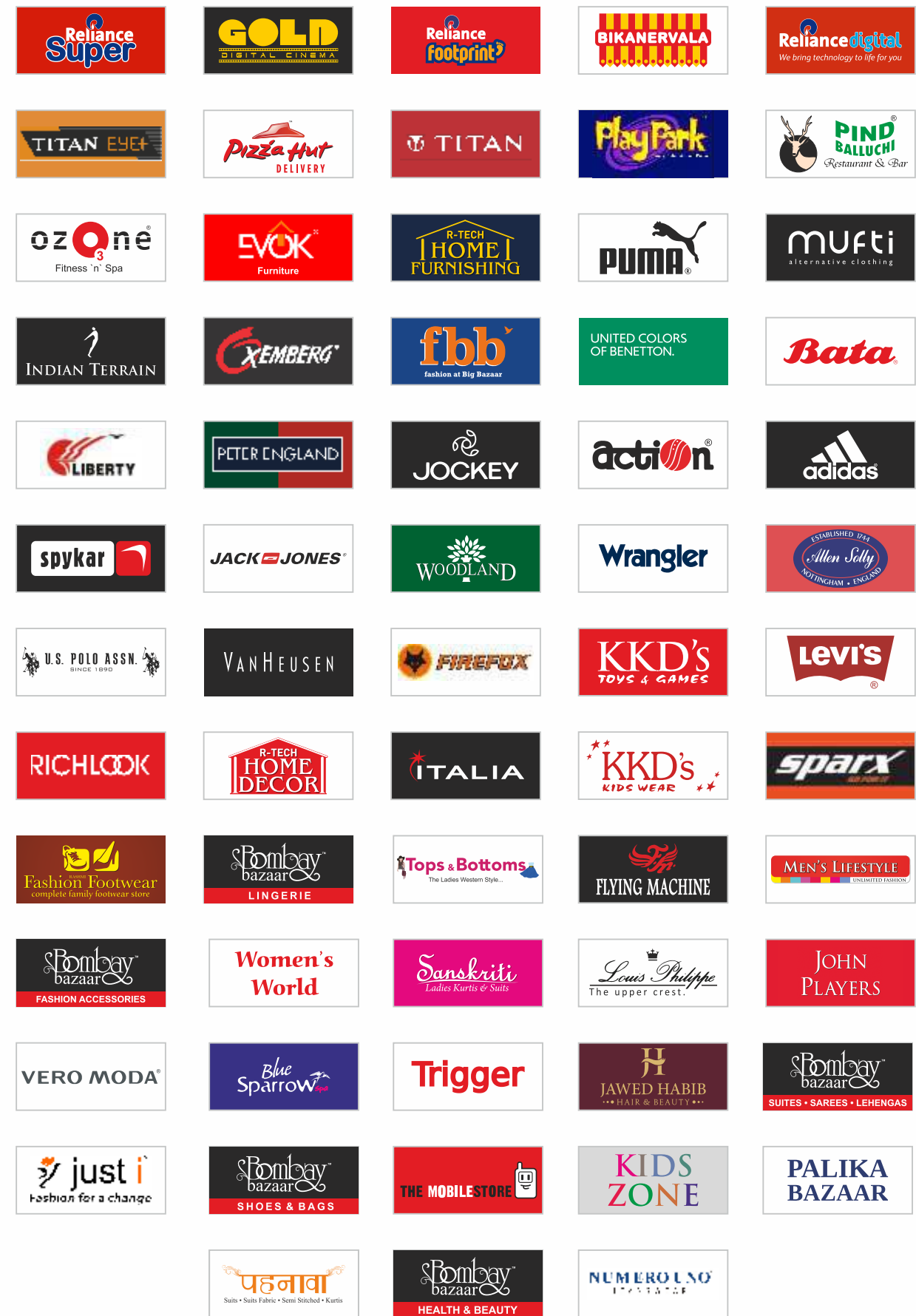
## OUR LANDMARK PROJECTS

 Operational	 Operational	 Operational	 Operational
 Operational	 Delivered	 Delivering Soon	 Under Construction
 Under Construction	 Under Construction	 Under Construction	 Under Construction
 Under Construction	 New Launch	 65 STORES ALREADY OPERATIONAL	<p>Ongoing R-Tech projects are registered with RERA Authority and documents can be verified at <a href="http://www.rera.rajasthan.gov.in">www.rera.rajasthan.gov.in</a></p>

More than  
**17,000**  
Satisfied Customers...  
and counting

COMMERCIAL • RESIDENTIAL • TOWNSHIPS • RETAIL  
ALWAR • BEAWAR • BEHROR • BHIWADI • BIKANER • JAIPUR • NEEMRANA

## Our Associated Brands







Actual View

**R>TECH**  
**CAPITAL**  
**MALL**  
 BHIWADI

Completion Year: 2010  
 Covered Space: 350000 Sq Ft Approx  
 Fully Occupied  
 Status: Delivered

**CAPITAL**  
**GALLERIA**  
 BHIWADI *Retail cum Office*

Completion Year: 2016  
 Covered Space: 535000 Sq Ft Approx  
 Total No Of Units: 963  
 Status: Delivered



Actual View

**R>TECH**  
**CROSS POINT**  
**MALL**  
 ALWAR

Completion Year: 2011  
 Covered Space: 200000 Sq Ft Approx  
 Fully Occupied  
 Status: Delivered



Actual View



Actual View

**CAPITAL**  
**HIGHSTREET**  
 BHIWADI *Shops • Offices • Studio Apartments*

Completion Year: 2016  
 Covered Space: 1050000 Sq Ft Approx  
 Total No Of Units: 1849  
 Status: Delivered



Actual View

**CAPITAL**  
**HIGHWAY ARCADE**  
 BEHROR

Completion Year: 2016  
 Covered Space: 125000 Sq Ft Approx  
 Total No Of Units: 207  
 Status: Delivered

**R>TECH**  
**CAPITAL**  
**GALLERIA**  
 ALWAR  
*Retail • Offices • Multiplex • Studio Apartments*

Completion Year: 2018  
 Covered Space: 300019 Sq. Ft.  
 Plot Area: 5655 Sq. mtr.  
 Total No of Units: 534  
 Status: Under Construction  
 RERA REGN. NO: RAJ/P/2017/073



Artistic View





Completion Year: 2020  
 Spread Across: 85 Bighas  
 Affordable Housing, Plots &  
 Commercial Spaces  
 Status: Under Construction  
 RERA REGN. NO: RAJ/P/2017/034



## मुख्यमंत्री जन आवास योजना - 2015

**EWS एवं LIG हाउसिंग पर केंद्रित**

Completion year: 2018  
 Total No Of Units: 4500  
 Status: Under Construction



Completion Year: 2018  
 Covered Space: 400000 Sq. Ft.  
 Total No of Units: 636  
 Status: Under Construction  
 RERA REGN. NO: RAJ/P/2017/074



Phase - I: Completion Year: 2021  
 Plot Area: 28454 Sq. mtr.  
 Total No of Units: 2119  
 Status: Under Construction  
 RERA REGN. NO: RAJ/P/2017/153



Phase - I: Completion Year: 2020  
 Plot Area: 11890 Sq. mtr.  
 Total No of Units: 859  
 Status: Under Construction  
 RERA REGN. NO: RAJ/P/2017/045



Completion Year: 2021  
 Plot Area: 5251.70 Sq mtr  
 Total No Of Units: 405  
 Status: Under Construction  
 RERA REGN. NO: RAJ/P/2018/612



## मुख्यमंत्री जन आवास योजना - 2015 EWS एवं LIG हाउसिंग

Completion year: 2023  
 No. Of Units: 342 (Tower A,B & C)  
 Status: Under Construction  
 RERA REGN. NO: RAJ/P/2018/616



Completion Year: 2021  
 Plot Area: 5493.70 Sq mtr  
 Total No Of Units: 637  
 Status: Under Construction  
 RERA REGN. NO: RAJ/P/2018/701

